



The Environment

The topic *environmental issues, including air quality* has made the Utah Priorities Project top ten list every gubernatorial election over the past decade, although it has never risen above seventh place. In 2016, *air quality* and *the environment* were separated into two topics based on preliminary survey results.

STRICTER ENVIRONMENTAL LAWS

A majority (53%) of Utahns are quite concerned about the environment, rating their level of concern as a four or a five on a five-point scale.¹ This level of concern is tied closely to a person’s ideology with liberals tending to be more concerned. It is notable that a majority of every ideological group—aside from those who are “very conservative”—are quite concerned.

Similar links to ideological positions appeared when respondents were asked whether or not stricter environmental laws and regulations cost too many jobs and hurt the economy.² Liberals are more likely to agree that additional regulations are worth the cost. Overall, Utahns are essentially split down the middle (52% to 48%).

While less than half (47%) of urban Utahns consider stricter environmental controls too costly, two-thirds (66%) of rural Utahns hold this opinion. Millennial Utahns are more likely to think environmental controls are worth the cost.³

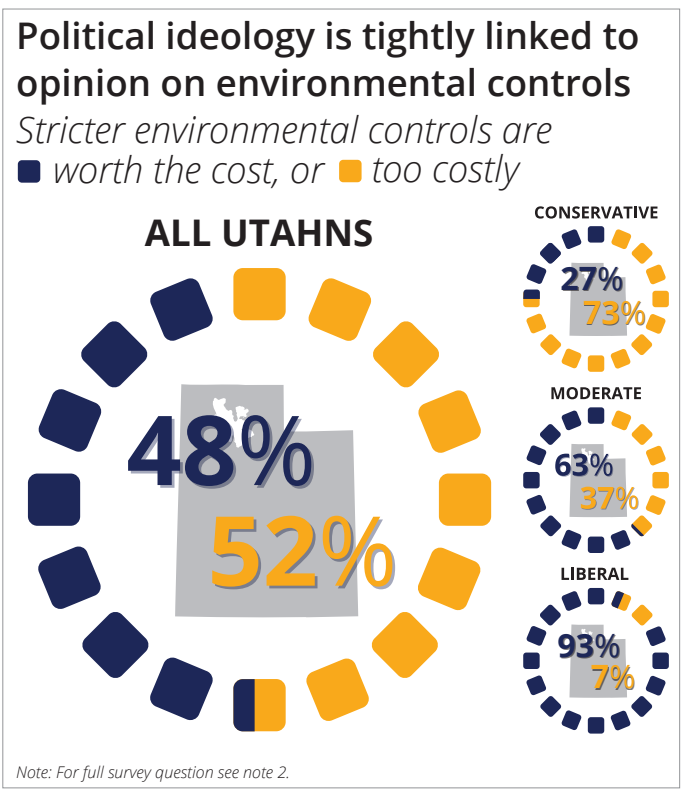
PROTECTION OF UTAH’S NATURAL SURROUNDINGS

When asked about their concern for the environment, Utahns indicated that their highest priority is protecting Utah’s natural surroundings. Accordingly, this brief focuses primarily on this issue. For the purpose of this brief, lands are considered protected if they have been especially designated to preserve their natural, historic, or scenic values for either intrinsic or recreational purposes.⁴

Two federal agencies, the Bureau of Land Management (BLM) and the U.S. Forest Service (USFS), hold 57% of Utah’s lands.⁵ These agencies focus on long-term use over short-term use, and generally administer their land according to multi-use principles. The BLM juggles the co-equal priorities of energy development, recreation, grazing, conservation, and protection of wild horses and burros.⁶ The USFS prioritizes timber, recreation, grazing, protection of watersheds, and the protection of fish and wildlife habitats.⁷ While the level of protection varies, these lands have moderate protection balancing both conservation and sustainable development and extraction. State Sovereign Land—which is administered by Utah Division of Natural Resources—generally falls under the same category.⁸

Other federal lands have a higher level of protection. Wilderness lands and wildlife reserves focus on limiting long-term human impact and protecting wildlife habitat, while lands administered by the National Park Service focus on protecting wildlife habitat and recreation.⁹ These lands, along with state parks and state wildlife reserves, account for just under 17% of Utah’s lands.¹⁰

Utah’s State Institutional Trust Lands are the largest amount of land (6%) under the control of the state. They are required to be used to maximize sustainable revenue for Utah’s public schools through development, recreation, or otherwise.¹¹



Private and tribal land do not have any official protection, and permitted development varies widely based on ownership. Private lands include those held by individuals, counties, cities, and townships. While these entities might designate some land for conservation or recreation, the majority of these lands have little or no protection available.

PROTECTION OF ADDITIONAL LANDS

There are ongoing discussions about the protection of additional Utah lands. Groups have requested President Obama consider the designation of a national monument in San Juan County known as Bears Ears. The State of Utah is also debating whether to sue the federal government for control of BLM and USFS lands. Since a presidential designation of a national monument is based on the Antiquities Act which can only be applied to federal lands, a successful lawsuit turning federal lands over to the state would severely limit future presidents' power to protect additional Utah lands.

A more nuanced approach is the Public Lands Initiative (PLI) spearheaded by Representatives Bishop and Chaffetz. The PLI, touted as a grand bargain, proposes a number of land use changes which add protections to some lands and remove protections from others.

The PLI gives the highest level of protection to an additional 56,000 acres and grants a new level of heightened protection to 4.4 million acres, although these protections do not reach the level that many conservation groups would prefer. However,

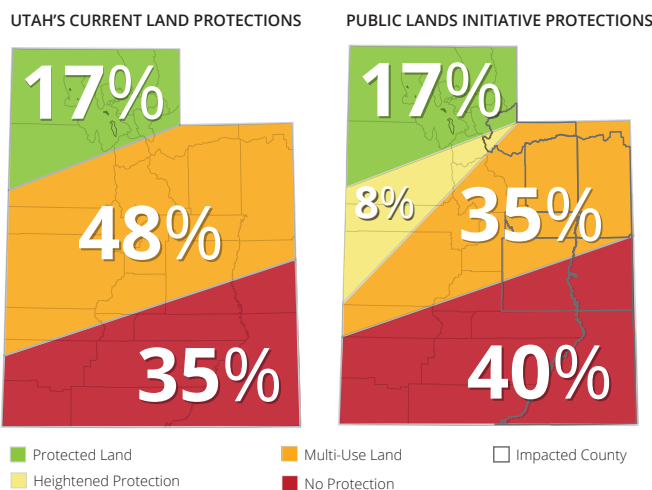
protections would be removed from an estimated 2.5 million acres to prioritize energy and mineral development. While these lands are already open for energy and mineral development, there would merely be fewer stipulations requiring consideration of natural, cultural, or scenic values.¹³

Utahns are divided on whether additional lands should be open for energy development. Survey results indicate that there are just as many Utahns who want to open up additional lands for energy development as there are Utahns who do not.¹⁴ Such a balanced result perhaps suggests that Utah's status quo is an acceptable compromise. If not, Utahns will ultimately need to decide the appropriate amount of protected lands, the amount of protection such lands merit, and the actions necessary to ensure their desires are enacted.

This research brief was written by Utah Foundation Research Analyst Christopher Collard.

1. Utah Foundation's 2016 Voter Survey. For more information see "2016 Utah Priorities Project: Survey of Voters' Issues and Concerns (Part I)" Appendix A for methodological details. <http://www.utahfoundation.org/uploads/rr739.pdf>
2. The question asked respondents "which statement comes closer to your views, even if neither is exactly right: stricter environmental laws and regulations cost too many jobs and hurt the economy or, stricter environmental laws and regulations are worth the cost." Utah Foundation (see note 1).
3. Utah Foundation (see note 1).
4. While some conservationists might point out that certain types of recreation such as off-highway-vehicles (OHV) or recreational shooting can sometimes run against conservation goals, Utah Foundation estimates that recreational purposes are one of the main considerations for many Utahns when thinking about the protection of their natural surroundings.
5. Utah Automated Geographic Reference Center (AGRC) "Land Ownership Dataset" <http://gis.utah.gov/data/sgjd-cadastre/land-ownership/> (accessed June 6, 2016).
6. Vincent, Carol Hardy, Laura A Hanson, and Jerome P Bjelopera, "Federal Land Ownership: Overview and Data," 2014, Congressional Research Service, <http://fas.org/sgp/crs/misc/R42346.pdf> (accessed June 6, 2016).
7. Ibid.
8. Utah Division of Forestry, Fire & State Lands, "State Lands," 2016, <http://www.ffsl.utah.gov/index.php/state-lands> (accessed June 6, 2016).
9. Vincent, "Federal Land Ownership: Overview and Data." (see note 6).
10. AGRC, "Land Ownership Dataset" (see note 5).
11. State of Utah School and Institutional Trust Lands Administration (SITLA), "What are Trust Lands," <https://trustlands.utah.gov/our-agency/what-are-trust-lands/> (accessed June 6, 2016).
12. The Wilderness Society, "Summary of Public Lands Initiative Act Discussion Draft," 2016, http://wilderness.org/sites/default/files/PLI%20Discussion%20Draft%20Summary%20Feb%202016%20FINALII_0.pdf (accessed June 6, 2016).
13. "Discussion Draft of the Utah Public Lands Initiative," 2016, http://robbishop.house.gov/uploadedfiles/discussion_draft_20jan16.pdf (accessed June 6, 2016); and see note 12.
14. Utah Foundation (see note 1)

Under PLI, Utah lands are both more and less protected



Note: The PLI includes the transfer of rights-of-way to state or county governments. Some conservation groups claim this threatens the quality of protection afforded of many of Utah's lands.¹²
 Source: Discussion Draft of the Utah Public Lands Initiative (see note 13).