

UTAH FOUNDATION

Research Report

Report Number 641

March/April 2001

Utah's Statewide Testing Results: 2000

In order to provide an assessment of student performance, public school students in grades 5, 8, and 11 have been tested each fall since 1990. Originally this state-mandated program was designed to provide a uniform test of all students in one grade of each elementary, middle and high school in the state. In the fall of 2000, third grade students were added to Utah's statewide testing program. Since 1997, the State Office of Education has used the Ninth Edition of the Stanford Achievement Test (SAT). For the first seven years of this program (1990-1996), the SAT Eighth Edition was used.

These norm-referenced achievement tests provide an assessment of student performance in Utah relative to a national norm. Each year the results are reported for each school in the state in the major subject areas of mathematics, reading, language/English, science, and social science. In addition, test results include a complete battery score, which is derived from an unweighted average across all subtests.

The Norm Group

A norm-referenced achievement test is designed so the results of the test can be readily compared to the performance of students nationally. When the test is developed, it is given to a representative national sample of students (the norm group) for each grade and subject. After administration of this test, results for a school are reported as "median national percentile ranks."

A median is the middle result, that is, the score achieved by the middle student in the school with

one-half of the students scoring above the middle student and one-half scoring below. The percentile rank equals the percentage of students nationally that achieved results below the median student. If a school has a median score in the 56th percentile, it would signify that the typical (middle) student in that school scored better than 56 percent of the students who took the test nationally when it was normed.

School Population Differences

The SAT (or any other test for that matter) cannot possibly provide a complete measure of academic performance or overall quality in Utah's public schools. The test measures only a limited range of the skills taught in the classroom.

One of the major concerns expressed by educators about a statewide testing program was that comparisons between schools with very different socio-economic characteristics would be made. Such comparisons can be unfair and misleading. Test scores not only measure the quality of education, but are highly correlated to socio-economic indicators such as income, migration (stability of the population), urban/rural characteristics, family type, racial composition, language, etc.

Looking at test scores and concluding that some schools are better than others is too simplistic. In an attempt to deal with this, the State Office of Education created the expected test range for each school based on the percentage of students in each school obtaining free or reduced price lunch. This statistic is used as a measure of low income and is the best readily available socio-economic indicator

UTAH FOUNDATION is a private, nonprofit public service agency established to study and encourage the study of state and local government in Utah, and the relation of taxes and public expenditures to the Utah economy.

that can be used to compare differences between student populations.

Despite these caveats, the statewide testing program is a useful barometer for educators, parents, and legislators in evaluating our public schools. The test results are more meaningful if there is an appreciation of the limitations and of the factors which contribute to high or low test scores.

An example of the correlation between the percent of students that are low income with tests scores is shown in **Figures 1 and 2**.

These graphs show the percent of 3rd and 5th grade students that receive free or reduced price lunch plotted against their 2000 Complete Battery Test score for all elementary schools in Utah that tested more than 14 students, except for schools in the Salt Lake City School district¹. Results for schools testing fewer than 15 students are not plotted because test scores of individual students in such small schools may significantly distort the group statistics for that school.

Also shown on the graph is the least-squares linear regression line for the plotted points. The plotted points and the regression line depict an inverse relationship between test scores and the percent of low income students. That is, the schools that had high test scores also have relatively fewer low income students. Conversely, the schools with lower test scores tend to have higher percentages of low income students.

Demographic Change in the 90s

During the 1990s, there has been a significant change in the ethnic/racial

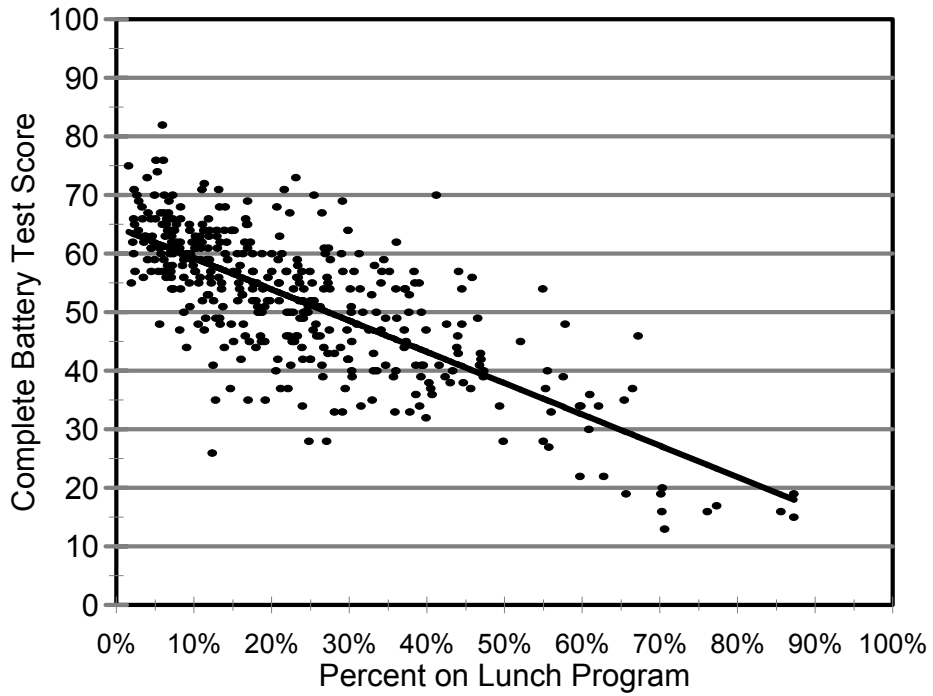
composition of the population in Utah. 2000 Census numbers reveal that Utah's majority population (white non-hispanic) grew by 21 percent between 1990 and 2000 while the minority populations grew by 117 percent. The fastest growing segment of the minority populations were hispanics whose numbers increased by 138 percent. In 1990, minorities comprised 8.8 percent of the population; by 2000, this figure had increased to 14.7 percent.

Of course, the increased diversity of Utah's inhabitants is reflected in the public schools. Hispanic, Asian/Pacific Islander, black, and American Indian students now make up 14.1 percent of Utah's student population as opposed to 7.4 percent in 1990. **Figures 3 and 4** show the racial and ethnic make-up of Utah's student population from 1978 to 2000. **Figure 3** shows a significant decline in the percentage of Utah students who are white, particularly in the last ten years. **Figure 4** shows, that of the four minority classifications, the Hispanic and Asian/Pacific Islander segments of the student population have increased.

National research studies (and an examination of Utah test results over the past eleven years) consistently show that student performance on norm-referenced achievement tests is highly correlated with socio-economic factors such as income, racial and ethnic background, parents educational attainment levels, transiency, and the stability of families. The significant demographic changes that are taking place in Utah inevitably put downward pressure on test scores for schools that are impacted by the relatively rapid changes in their student population. Utah educators face many new challenges as they adjust and adapt educational programs to meet the needs of Utah's more diverse student population.

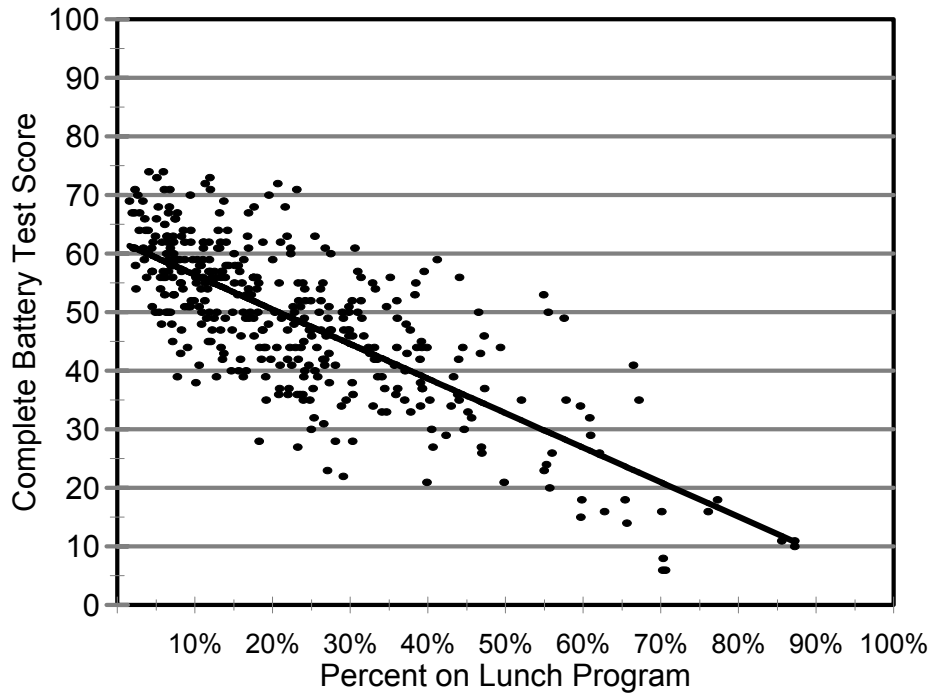
¹Salt Lake City School District test score are not comparable this year. This is explained later in this report.

Figure 1
Percent Low Income Students Versus 2000 Test Scores
3rd Grade - Schools* in Utah



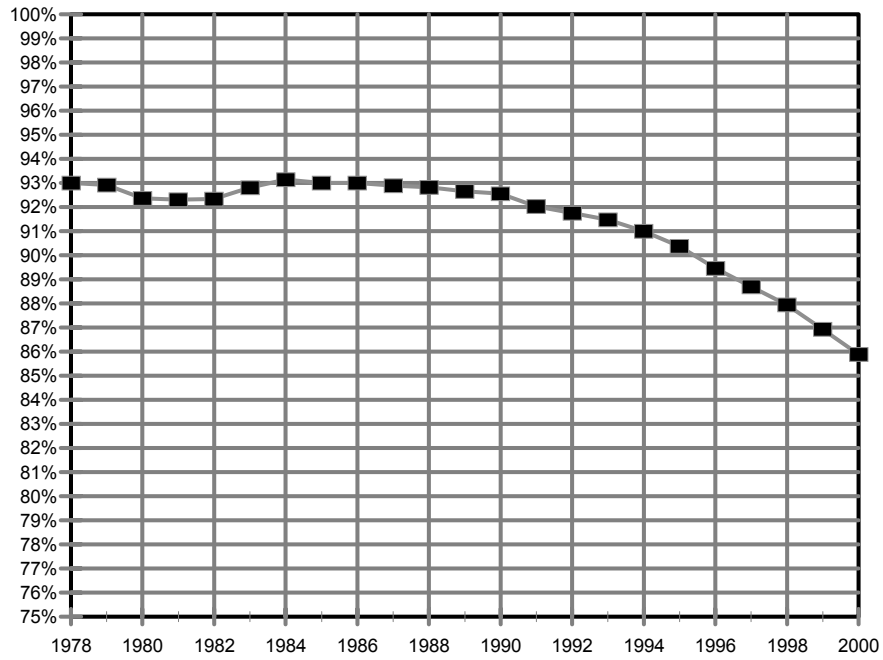
*Excludes Salt Lake City School District scores.
Source: Utah State Office of Education.

Figure 2
Percent Low Income Students Versus 2000 Test Scores
5th Grade - Schools* in Utah



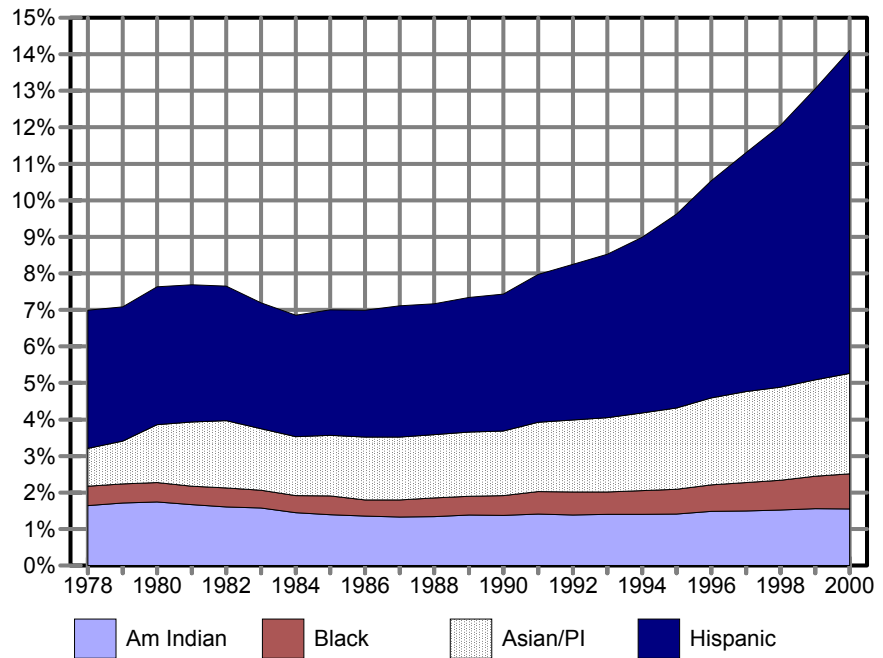
*Excludes Salt Lake City School District scores.
Source: Utah State Office of Education.

Figure 3
Percentage of Utah's Public School Students
Who Are White*: 1978 to 2000



*White - does not include students that are white hispanic.
 Source: Utah State Office of Education.

Figure 4
Utah's Minority Student Population
Percentage by Ethnic / Racial Category: 1978 to 2000



Source: Utah State Office of Education.

Exempting Limited English Proficient Students

During the last decade, the population of students with “Limited English Proficiency” (LEP) has increased significantly. LEP students with less than two full years of English instruction have been exempted from participating in Utah’s statewide testing program.

In its annual report of statewide testing results the Utah State Office of education reported that the “Salt Lake City School District chose to apply exemption criteria this year in a way that was inconsistent with the State requirements. In many cases, students were exempted who had not reached the fluent/competent level on the IPT (Language Proficiency Test), regardless of how long the student had been in English instruction.” ... “The exemption of additional students this year from Salt Lake School District alters the data trend that has been established and makes this year’s results non-comparable. While the total number of students who were exempted and should have been included is relatively small, ... [test] results [involving this district], therefore, must be interpreted with caution.”²

The Salt Lake City School District’s decision to use its own LEP exemption criteria has compromised the comparability of its test scores for 2000 with the previous 3 years in which the SAT Ninth edition has been used. The statewide totals for the year 2000 are not strictly comparable to the previous three years as well. The actual effect of exempting a few hundred extra students per grade by the Salt Lake City School District on

² *Utah Statewide Stanford Achievement Test Results 2000*, Utah State Office of Education, page 1.

the state total test scores is very small but indeterminate, in relation to 32,000 to 35,000 students tested statewide per grade.

Test Results for 2000

Table 1 and Figures 5 through 10 provide the statewide test results with emphasis for the years of SAT Ninth edition³ for grades 5, 8, and 11 by major subtest and for the complete battery. Below is a summary of the performance of each of these grades.

Fifth Grade

Statewide scores for the fifth grade were about the same in the fall of 2000 as they have been since 1997, with the exception of the science score. Over the four-year period of testing, the best scores for the fifth grade were achieved in the 2000 science subtest which increased from the 60th percentile to the 65th percentile. This is an excellent score and the only area in which the typical (median) Utah student in fifth grade is scoring well above the national average of 50. One other bright spot for the fifth grade is the thinking skills test score, which ranks in the 55th percentile.

Three major subtests had similar scores for the fifth grade — social science (51st percentile), mathematics (49th percentile), and reading (49th percentile). Scores that hover

³This report focuses on the last four years when the Ninth Edition has been used. Prior to 1997, the Stanford 8 test was used in Utah. The Stanford 8 is a different test and not readily comparable to the Stanford 9. In Table 1, the results of the Eighth Edition and Ninth Edition are presented. Persons interested in reading Utah Foundation’s analysis of test scores from the Eighth Edition used from 1990 through 1996 may contact Utah Foundation for these reports.

Table 1
Utah Statewide Testing Results: 1990-2000
by Grade and Major Subtest Area
Median National Percentile Ranks* for the Total State

SUBTEST	Stanford Achievement Test Results - Grade 5											
	Eighth Edition**							Ninth Edition**				
	1990	1991	1992	1993	1994	1995	1996	1997	1998	1999	2000	
Mathematics	60th	62nd	62nd	60th	60th	60th	59th	52nd	49th	49th	49th	
Reading	53rd	55th	53rd	53rd	51st	51st	51st	49th	47th	47th	49th	
Language/English	48th	48th	48th	48th	48th	52nd	52nd	47th	44th	47th	47th	
Science	52nd	56th	56th	56th	56th	56th	56th	60th	60th	60th	65th	
Social Science	55th	55th	55th	55th	51st	51st	51st	51st	51st	51st	51st	
Thinking Skills***	56th	56th	56th	56th	56th	56th	56th	53rd	53rd	53rd	55th	
Total/Complete Battery****	53rd	55th	54th	54th	53rd	53rd	53rd	50th	50th	50th	51st	
Students Tested	36,502	35,664	36,331	34,870	34,369	33,448	33,286	32,816	34,171	33,823	34,298	
As a % of enrollment	98%	98%	97%	96%	96%	95%	95%	95%	96%	95%	95%	

SUBTEST	Stanford Achievement Test Results - Grade 8											
	Eighth Edition**							Ninth Edition**				
	1990	1991	1992	1993	1994	1995	1996	1997	1998	1999	2000	
Mathematics	53rd	54th	55th	53rd	51st	51st	50th	60th	58th	58th	58th	
Reading	55th	55th	55th	55th	55th	55th	55th	53rd	53rd	53rd	53rd	
Language/English	45th	45th	45th	45th	45th	48th	45th	50th	47th	50th	50th	
Science	53rd	53rd	58th	58th	53rd	58th	58th	58th	58th	58th	58th	
Social Science	50th	50th	54th	54th	50th	50th	50th	58th	58th	52nd	58th	
Thinking Skills***	56th	56th	56th	56th	56th	56th	56th	53rd	53rd	53rd	54th	
Total/Complete Battery****	51st	51st	53rd	51st	50th	51st	50th	54th	54th	53rd	53rd	
Students Tested	33,610	31,969	35,417	36,411	35,904	36,122	34,610	35,070	34,404	34,053	33,101	
As a % of enrollment	98%	98%	97%	95%	94%	94%	93%	95%	95%	95%	94%	

SUBTEST	Stanford Achievement Test Results - Grade 11											
	Eighth Edition**							Ninth Edition**				
	1990	1991	1992	1993	1994	1995	1996	1997	1998	1999	2000	
Mathematics	54th	59th	59th	59th	59th	59th	59th	68th	68th	68th	68th	
Reading	58th	58th	61st	58th	58th	61st	58th	60th	60th	60th	60th	
Language/English	45th	51st	51st	51st	51st	51st	51st	53rd	53rd	47th	47th	
Science	60th	60th	60th	60th	60th	66th	66th	62nd	62nd	62nd	62nd	
Social Science	56th	56th	56th	56th	56th	56th	56th	62nd	52nd	52nd	62nd	
Thinking Skills***	53rd	57th	57th	57th	57th	57th	57th	52nd	52nd	52nd	52nd	
Total/Complete Battery****	53rd	55th	56th	56th	55th	56th	56th	60th	58th	57th	59th	
Students Tested	25,482	26,455	29,067	30,135	28,608	31,690	32,560	32,620	34,397	32,934	32,702	
As a % of enrollment	94%	94%	92%	90%	90%	91%	90%	89%	91%	90%	91%	

* A score of the 56th percentile signifies that the typical student (median student) in Utah scored better than 56 percent of the students who took the test nationally when it was normed.

The Stanford Achievement Test - Ninth Edition, administered in 1997 to 2000, is a new test with a different norm group. These achievement tests are referenced to a specific norm group at a particular point in time. The norm group is chosen to represent the performance of the overall population in the United States at a point in time for that specific test. **Therefore, the results from the Ninth Edition are not readily comparable to scores from the Eighth Edition.

***Thinking Skills subtest is a composite of the of the most challenging test items.

****For the Eighth Edition the Total Battery was a composite score consisting of mathematics, language/English, reading, study skills, and at grades five and eight, listening. For the Ninth Edition the Complete Battery is an unweighted average across all subtests. Note that these are two different ways to arrive at a composite score.

Source: Utah State Office of Education.

Figure 5

Mathematics
Median SAT Scores* for Utah

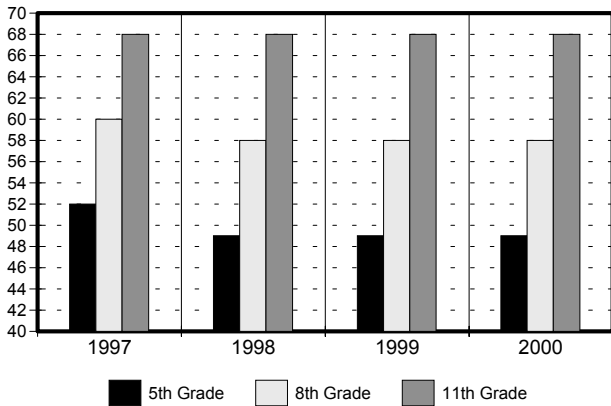


Figure 8

Science
Median SAT Scores* for Utah

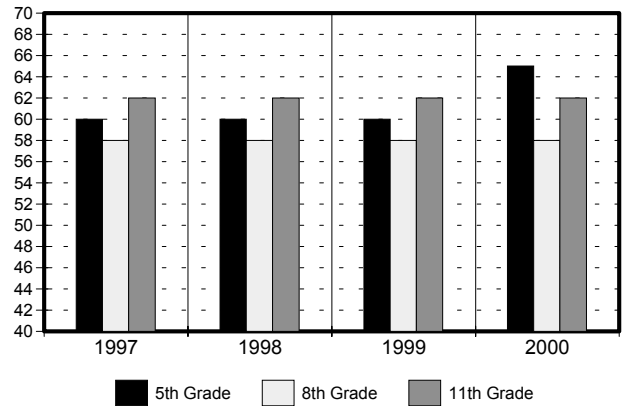


Figure 6

Reading
Median SAT Scores* for Utah

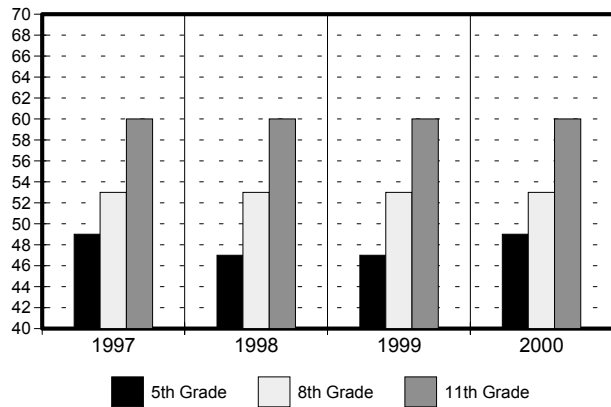


Figure 9

Social Science
Median SAT Scores* for Utah

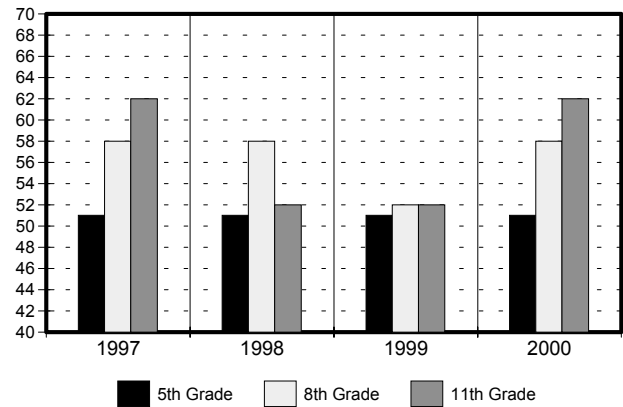


Figure 7

Language/English
Median SAT Scores* for Utah

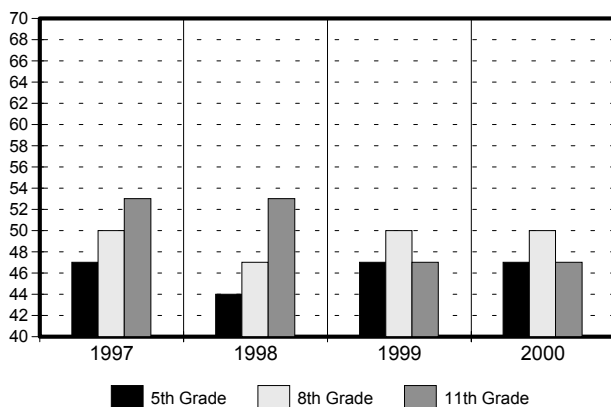
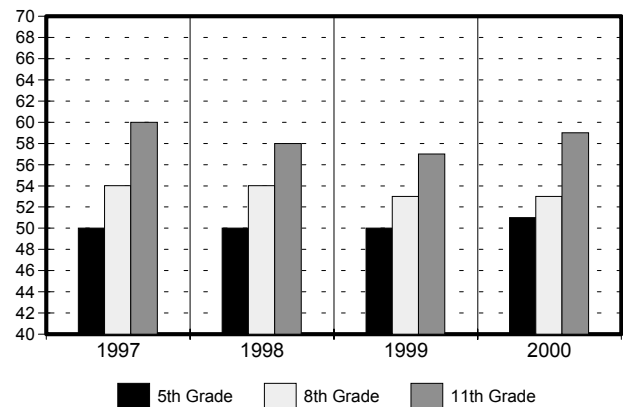


Figure 10

Total Basic Battery
Median SAT Scores* for Utah



* Median percentile rankings

around the national norm should cause concern for Utahns. While Utah is becoming more diverse, the population is still relatively more homogeneous compared to the nation as a whole, with significantly less poverty, and those demographics would suggest higher expected scores. Of particular concern are the language/English scores (47th percentile).

The complete battery score of 51, while showing a one point increase from the previous three years, may not be a sign of real improvement because of the Salt Lake City District treatment of LEP students.

Eighth Grade

Eighth grade Utah students recorded a statewide complete battery score of 53, a level that has been very consistent since the implementation of the SAT Ninth edition. The three best subtest scores were: mathematics, science, and social science, each scoring a relatively high 58th percentile. One subtest score increased (thinking skills, from 53 to 54) and two subtest scores, reading (53rd percentile) and language/English (50th percentile) remained the same from the previous year.

Eleventh Grade

Eleventh grade test scores continue to be quite good with the notable exception of language/English which has been consistently the weakest score in all grades for the entire eleven years in which the statewide testing program has been conducted. The complete battery of 59th percentile is up by two from the previous year but one below the high of 60 in 1997.

The eleventh grade maintained its

excellent mathematics score of 68, the highest subtest score recorded in the history of Utah's testing program. It is six points higher than the next best subtests - science and social science - which scored a very respectable 62. The reading score of 60 and the 52 for thinking skills are consistent with the last four years.

The language/English score remained at the 47th percentile, 3 points below the national norm of 50. This highlights a significant weakness when compared to the other 11th grade test scores.

Overall, eleventh grade test scores seem to be very good. It should be noted, however, that of the three grades tested, a smaller percentage of students statewide are tested in the eleventh grade — 91 percent, compared to 95 percent in the fifth grade and 94 percent in the eighth grade. If a higher percentage of students were tested in the eleventh grade, statewide test scores would probably be lower.

New Third Grade Results

Testing results for the third grade are being reported for the first time as part of the statewide testing program. The 2000 results are as follows:

Mathematics	54 th percentile
Reading	60 th percentile
Language/English	38 th percentile
Environment	52 nd percentile
Complete Battery	53 rd percentile

For the third grade, the environment category takes the place of science and social science.

The third grade performance statewide is good, with the obvious exception of

language/English at 38. This seems surprising, because third grade students achieved their best score in reading. The 38th percentile score is by far the lowest statewide rank achieved in any subtest during the eleven years of the testing program.

The statewide testing of students over the past eleven years using the Stanford Achievement tests have consistently shown that Utah students have difficulty with language/English, that is, skills relating to writing such as composing, editing, and spelling. It is disconcerting that this problem has been evident for over a decade, yet Utah has been unable to respond with strategies that result in improvement.

Conclusion

An examination of Stanford Ninth Edition test scores for individual schools⁴, as illustrated in figures 1 and 2, shows a wide range of results. Often the differences observed between high performing schools and low performing schools are readily explained by the socio-economic characteristics of the student population. Because socio-economic factors have such a strong bearing on test results, valid comparisons between schools or districts cannot be made without accounting for the many differences in student populations. The best comparisons of student performance, for a school or district, are those with itself over

time.

On a statewide basis, test scores for the last four years have been quite consistent, showing little change either positive or negative. As a background to these seemingly unchanging results, Utah is experiencing a significant change in the characteristics of its student population - with relatively large increases in the number of hispanic students. In many respects these changes can be seen as quite positive. Yet rapid change does put new stresses on the education system, as evidenced by the additional students with limited English proficiency inappropriately exempted from the test by the Salt Lake City School district. Utah educators, parents, and public school students will need to address the new challenges posed by the demographic realities of the present.

The Statewide Testing Program has highlighted an ongoing relative weakness in English achievement for a decade. Efforts to address this, are ongoing, and should be expanded. This problem has been systemic to Utah students and now becomes somewhat more difficult in light of the changing student population.

It is important that all of Utah's students leave the public schools with the skills they will need to be successful in life. Education performance measures, such as the Stanford 9 Achievement test, while imperfect, provide useful information to those who seek to achieve this goal.

⁴ Test scores by school and school district are found in the appendix tables of this report.

Appendix Table A
Utah 3rd Grade Statewide Testing Results for 2000: Stanford Achievement Test - Ninth Edition
Median Percentile Ranking of Utah Districts and Schools

District or School 3rd Grade	2000			3rd Grade Scores by Major Subject: 2000 (Median Percentile Rank)					District or School 3rd Grade	2000			3rd Grade Scores by Major Subject: 2000 (Median Percentile Rank)				
	Students Tested		% Free	Composite	Math	Reading	English	Environ.		Students Tested		% Free	Composite	Math	Reading	English	Environ.
	Count	Pct.	Lunch							Count	Pct.	Lunch					
Statewide - 3rd	34320	94%		53	54	60	38	52									
ALPINE	3645	97%	13%	59	59	65	43	62	GARLAND	47	92%	26%	51	42	66	38	52
ALPINE	74	100%	4%	66	71	66	59	68	LAKE VIEW	61	97%	18%	51	54	53	38	52
ASPEN	79	94%	18%	52	48	55	43	52	MCKINLEY	84	97%	25%	42	42	45	27	35
BARRATT	73	91%	9%	51	52	57	38	52	MOUNTAIN VIEW	41	79%	26%	67	62	60	78	73
BONNEVILLE	114	94%	9%	55	59	57	38	52	NORTH PARK	93	95%	18%	52	45	57	38	62
CASCADE	94	100%	7%	62	65	67	50	68	WILLARD	69	97%	16%	48	45	51	38	62
CEDAR RIDGE	147	99%	13%	68	62	75	59	68	CACHE	926	97%	14%	62	62	69	50	62
CEDAR VALLEY	18	86%	12%	26	22	22	16	42	GREENVILLE	167	99%	11%	65	62	70	50	68
CENTRAL	66	92%	27%	55	54	66	43	62	LEWISTON	83	97%	27%	61	59	69	43	62
CHERRY HILL	95	89%	22%	50	52	57	34	52	LINCOLN	75	94%	27%	47	45	55	30	35
EAGLECREST	133	100%	10%	61	68	63	50	62	MILLVILLE	76	94%	17%	69	65	70	59	79
FOOTHILL	101	94%	8%	61	59	69	50	62	NIBLEY	69	100%	11%	59	62	59	43	68
FORBES	97	100%	19%	54	52	65	43	62	PARK	51	94%	22%	67	62	75	63	62
GENEVA	63	79%	36%	49	42	59	30	42	PROVIDENCE	100	98%	9%	65	65	71	59	62
GREENWOOD	96	100%	30%	42	40	53	30	31	RIVER HEIGHTS	79	96%	15%	64	62	70	50	68
GROVECREST	108	99%	8%	61	62	65	50	68	SUMMIT	157	96%	18%	57	59	66	38	52
HIGHLAND	139	100%	4%	63	65	69	50	62	WELLSVILLE	69	96%	12%	59	65	66	50	62
HILLCREST	65	93%	21%	63	52	66	63	68	CARBON	273	96%	27%	44	45	53	30	42
LEGACY	128	98%	4%	63	62	66	50	68	CASTLE HEIGHTS	58	98%	24%	54	59	59	34	62
LEHI	73	100%	16%	54	52	65	38	52	CREEKVIEW	59	89%	37%	47	52	60	34	42
LINDON	61	98%	7%	54	45	53	50	62	MAURO, SALLY	74	100%	33%	43	40	53	27	42
MANILA	84	100%	9%	60	62	63	43	68	PETERSEN	24	100%	61%	30	25	35	23	35
MEADOW	111	99%	14%	54	59	53	38	62	WELLINGTON	58	97%	47%	41	35	44	27	42
MT. MAHOGANY	95	98%	NA	41	42	48	34	42	DAGGETT	12	100%	20%	41	45	36	34	35
NORTH RIDGE	151	99%	6%	65	65	69	50	73	MANILA	10	100%	35%	40	45	34	27	31
ORCHARD	104	96%	15%	57	54	66	34	73	DAVIS	4330	97%	11%	58	59	63	43	62
OREM	112	97%	10%	61	54	69	50	68	ADAMS	128	98%	6%	70	74	73	63	79
ROCKY MOUNTAIN	95	100%	5%	63	68	66	50	73	ADELAIDE	87	96%	17%	65	68	67	59	68
SCERA PARK	64	98%	19%	60	48	70	59	68	ANTELOPE	65	90%	47%	40	40	50	27	35
SEGO LILY	104	98%	8%	66	65	66	59	73	BLUFF RIDGE	135	91%	13%	62	65	67	59	62
SHARON	49	86%	37%	45	54	60	30	35	BOULTON	82	95%	7%	64	71	67	50	68
SHELLEY	149	96%	8%	64	62	67	50	73	BOUNTIFUL	70	90%	14%	60	65	66	50	52
SNOW SPRINGS	125	100%	NA	60	59	69	50	62	BURTON	85	99%	9%	59	59	66	43	68
SUNCREST	83	86%	39%	39	48	44	30	35	CENTERVILLE	62	100%	7%	60	59	70	50	62
VALLEY VIEW	98	100%	14%	55	52	66	43	52	CLINTON	97	99%	15%	37	35	39	27	35
VINEYARD	111	96%	17%	62	62	65	59	68	COLUMBIA	119	97%	7%	58	62	62	43	62
WESTFIELD	145	99%	NA	62	65	65	50	68	COOK	90	98%	16%	60	59	60	50	62
WESTMORE	63	95%	34%	59	62	65	38	62	CREEKSIDE	93	99%	14%	64	62	69	50	68
WINDSOR	78	99%	25%	51	52	62	43	52	CRESTVIEW	72	97%	23%	46	42	53	27	52
BEAVER	115	97%	21%	49	45	60	34	42	DOXEY	79	93%	29%	37	35	45	27	35
BELKNAP	57	98%	26%	51	45	63	34	42	EAST LAYTON	87	100%	3%	66	65	71	59	73
MILFORD	38	100%	32%	34	25	44	27	31	FARMINGTON	57	98%	6%	65	65	71	43	68
MINERSVILLE	20	91%	10%	60	62	65	63	62	FREMONT	48	89%	25%	28	24	32	23	31
BOX ELDER	715	92%	18%	51	52	57	38	62	HILLFIELD	97	94%	19%	46	48	62	30	35
BUNDERSON	78	100%	17%	45	42	48	30	52	HOLBROOK	64	98%	7%	61	62	62	63	62
CENTURY	38	76%	16%	60	59	66	38	62	HOLT	100	99%	20%	52	52	65	38	42
CORINNE	15	88%	30%	42	59	51	23	26	KAYSVILLE	114	97%	8%	54	52	57	34	68
DISCOVERY	62	79%	31%	48	45	53	34	62	KING	122	98%	18%	57	54	62	43	52
FIELDING	54	100%	24%	50	52	57	30	52	KNOWLTON	99	93%	4%	59	62	66	38	62
FOOTHILL	54	92%	17%	65	68	67	59	68	LAKESIDE	106	97%	8%	47	48	51	34	52

Note: Explanations of headings and other notes are found on page 60

District or School 3rd Grade	2000			3rd Grade Scores by Major Subject: 2000 (Median Percentile Rank)				
	Students Tested		% Free	Composite	Math	Reading	English	Environ.
	Count	Pct.	Lunch					
LAYTON	122	99%	16%	58	59	66	50	62
LINCOLN	99	98%	24%	42	42	48	30	35
MEADOWBROOK	63	100%	17%	62	59	63	50	73
MONTE VISTA	44	100%	10%	58	65	65	38	62
MORGAN	120	99%	3%	69	74	71	63	68
MOUNTAINVIEW	102	92%	6%	65	71	69	63	68
MUIR	72	100%	7%	64	65	71	59	68
OAK HILLS	63	95%	4%	73	74	76	68	73
ORCHARD	82	93%	15%	64	65	70	59	62
READING	102	97%	7%	69	74	71	50	68
SOUTH CLEARFIELD	61	80%	39%	41	42	44	38	31
SOUTH WEBER	92	100%	5%	57	59	62	50	62
STEWART	99	96%	3%	64	62	71	50	68
SUNSET	63	97%	23%	46	45	45	30	42
SYRACUSE	108	100%	7%	54	62	57	38	62
TAYLOR	55	100%	7%	56	54	62	59	68
TOLMAN	64	98%	14%	59	54	66	43	62
VAE VIEW	62	94%	33%	35	27	35	23	42
VALLEY VIEW	65	100%	6%	82	86	81	74	85
WASATCH	40	83%	52%	45	45	51	30	42
WASHINGTON	36	92%	22%	71	80	67	63	68
WEST BOUNTIFUL	80	95%	9%	56	59	63	43	52
WEST CLINTON	85	100%	13%	35	40	37	23	42
WEST POINT	79	96%	8%	62	65	66	50	68
WHITESIDES	79	100%	34%	40	35	53	27	35
WINDRIDGE	132	100%	2%	62	71	70	43	62
WOODS CROSS	103	99%	13%	49	48	57	34	42
DUCHESNE	282	98%	33%	43	40	48	34	42
ALTAMONT	34	100%	28%	59	65	65	43	62
DUCHESNE	49	98%	38%	55	54	60	34	62
EAST	139	99%	39%	36	32	37	27	42
MYTON	22	96%	60%	34	35	34	27	22
NEOLA	30	100%	46%	56	48	62	43	62
EMERY	207	96%	26%	53	54	60	38	52
BOOK CLIFF	23	92%	37%	44	40	53	30	42
CASTLE DALE	28	97%	28%	54	48	59	38	62
CLEVELAND	27	96%	29%	57	62	69	50	42
COTTONWOOD	27	93%	24%	57	54	60	38	62
FERRON	40	100%	31%	57	59	60	38	62
HUNTINGTON	62	97%	47%	49	54	57	34	31
GARFIELD	73	97%	29%	54	59	60	38	52
BRYCE VALLEY	18	95%	34%	47	37	60	30	52
ESCALANTE	13	100%	26%	62	68	57	43	52
PANGUITCH	36	97%	33%	47	45	66	38	35
GRAND								
RED ROCK	113	94%	45%	54	48	57	43	52
GRANITE	5008	93%	22%	45	48	51	30	42
ACADEMY PARK	66	80%	40%	37	40	44	23	42
ARCADIA	69	93%	22%	37	40	41	23	31
BACCHUS	106	91%	18%	50	54	60	34	42
BEEHIVE	99	92%	23%	56	65	62	38	52
BENNION	77	94%	11%	62	62	70	50	62

District or School 3rd Grade	2000			3rd Grade Scores by Major Subject: 2000 (Median Percentile Rank)				
	Students Tested		% Free	Composite	Math	Reading	English	Environ.
	Count	Pct.	Lunch					
BRIDGER	132	94%	17%	35	35	37	23	26
CANYON RIM	70	93%	27%	56	54	59	43	52
COPPER HILLS	129	90%	30%	40	42	45	30	35
COTTONWOOD	70	97%	2%	55	52	63	38	52
CRESTVIEW	72	97%	12%	61	62	69	43	62
DRIGGS	60	100%	4%	67	71	70	59	68
EASTWOOD	50	100%	2%	71	77	75	63	68
EDWARD, LIBBIE	34	100%	21%	40	35	55	27	31
FARNSWORTH	97	88%	39%	34	32	39	18	31
FOX HILLS	123	98%	28%	43	42	46	30	42
FREMONT	94	99%	22%	41	32	48	30	35
FROST	66	86%	21%	37	35	51	30	31
GOURLEY	92	98%	27%	28	25	35	14	26
GRANGER	90	85%	46%	37	48	39	21	31
HILLSDALE	100	94%	47%	43	54	51	27	31
HILLSIDE	99	90%	22%	50	54	57	30	52
HILLVIEW	53	88%	21%	59	62	65	50	62
HOLLADAY	37	95%	15%	45	45	51	21	62
HUNTER	113	98%	24%	50	48	59	38	52
JACKLING	74	99%	19%	35	32	44	21	35
LAKE RIDGE	66	96%	28%	33	25	41	21	31
LINCOLN	63	90%	56%	27	32	26	16	26
MAGNA	113	98%	35%	41	45	44	27	35
MEADOW MOOR	42	86%	18%	60	59	69	50	52
MILL CREEK	46	82%	26%	48	52	55	27	52
MONROE	101	90%	45%	38	42	41	27	35
MORNINGSIDE	60	98%	7%	67	62	77	43	68
MOSS	75	82%	43%	40	48	45	27	26
OAKRIDGE	78	99%	2%	75	77	77	63	79
OAKWOOD	39	100%	5%	70	71	80	59	68
OQUIRRH HILLS	55	100%	47%	42	48	53	30	35
ORCHARD	101	93%	25%	42	52	44	23	42
PENN, WILLIAM	68	94%	17%	66	65	71	59	68
PIONEER	80	94%	29%	33	42	39	18	26
PLEASANT GREEN	100	92%	40%	38	42	43	21	35
PLYMOUTH	79	99%	19%	45	48	48	30	52
REDWOOD	48	77%	70%	20	24	17	14	22
ROLLING MEADOW	64	84%	30%	47	62	50	30	52
ROOSEVELT	53	91%	44%	44	52	55	30	35
ROSECREST	47	89%	13%	71	74	75	59	79
SANDBERG	57	92%	26%	41	35	45	34	52
SILVER HILLS	92	99%	24%	34	40	32	21	35
SMITH	87	100%	12%	41	32	51	23	42
SOUTH KEARNS	69	88%	38%	33	35	41	21	31
STANSBURY	107	91%	55%	28	37	25	16	26
TAYLORSVILLE	67	92%	19%	51	59	60	34	42
TRUMAN	106	99%	17%	46	48	57	30	42
TWIN PEAKS	47	100%	10%	59	62	63	50	42
UPLAND TERRACE	87	100%	5%	74	71	77	63	79
VALLEY CREST	87	96%	22%	46	52	44	38	42
VISTA	79	89%	25%	50	52	62	34	35
WEST KEARNS	120	94%	40%	32	45	36	16	26
WEST VALLEY	136	97%	ERR	43	42	50	34	35

Note: Explanations of headings and other notes are found on page 60

District or School	2000			3rd Grade Scores by Major Subject: 2000				
	Students Tested		% Free	(Median Percentile Rank)				
	Count	Pct.	Lunch	Composite	Math	Reading	English	Environ.
3rd Grade								
WESTBROOK	115	99%	25%	55	65	66	34	52
WESTERN HILLS	83	92%	36%	33	32	36	18	35
WHITTIER	79	91%	25%	47	42	51	34	52
WILSON	82	87%	56%	33	42	43	18	26
WOODSTOCK	58	98%	8%	65	62	66	59	68
IRON	518	94%	25%	53	59	57	38	52
CEDAR EAST	81	100%	43%	48	54	53	27	52
CEDAR NORTH	100	99%	37%	54	59	57	34	52
CEDAR SOUTH	96	86%	20%	60	54	60	50	68
ENOCH	86	95%	30%	54	68	57	43	68
ESCALANTE	11	85%	50%	28	42	28	21	22
FIDDLERS CANYON	76	93%	21%	55	54	63	43	52
PAROWAN	68	97%	30%	45	54	44	30	42
JORDAN	5374	98%	10%	56	59	63	43	52
ALTA VIEW	102	95%	11%	72	74	78	68	73
ALTARA	119	100%	8%	60	59	63	50	62
BELL VIEW	88	96%	13%	49	45	55	34	52
BELLA VISTA	55	100%	6%	59	59	66	38	62
BLUFFDALE	131	97%	9%	50	54	55	34	52
BROOKWOOD	72	100%	3%	70	71	71	63	73
BUTLER	79	99%	5%	61	68	69	43	62
CANYON VIEW	75	100%	5%	66	74	63	50	68
COLUMBIA	122	99%	27%	39	37	46	27	35
COPPERVIEW	59	86%	41%	36	42	37	21	31
COTTONWOOD HEIGHT:	69	88%	11%	62	62	67	59	62
CRESCENT	143	100%	12%	57	54	65	43	52
DRAPER	154	97%	8%	61	65	67	43	62
EAST MIDVALE	77	93%	43%	38	42	46	27	31
EAST SANDY	89	95%	13%	52	62	59	34	52
EDGEMONT	92	97%	16%	57	62	66	38	52
ELK MEADOWS	124	98%	5%	57	62	66	43	62
GRANITE	90	98%	5%	59	62	63	50	62
HAYDEN PEAK	103	100%	7%	57	62	66	43	52
HEARTLAND	89	88%	26%	46	48	51	34	52
HERRIMAN	56	98%	12%	56	62	57	34	62
JORDAN HILLS	141	100%	9%	44	40	53	34	42
JORDAN RIDGE	119	94%	4%	62	62	67	50	68
LONE PEAK	124	100%	2%	60	65	69	50	62
MAJESTIC	66	93%	33%	40	45	43	30	42
MIDVALE	61	81%	70%	19	13	18	14	18
MIDVALLEY	89	94%	18%	50	52	53	27	52
MONTE VISTA	135	100%	8%	68	77	73	50	68
MOUNTAIN SHADOWS	146	97%	12%	49	54	48	30	52
MOUNTVIEW	59	97%	25%	52	59	66	30	42
OAK HOLLOW	121	98%	4%	56	52	62	43	62
OAKDALE	61	94%	9%	64	62	65	63	68
OQUIRRH	89	100%	19%	45	42	57	30	42
PARK LANE	88	99%	7%	66	62	76	59	62
PERUVIAN PARK	87	98%	6%	76	74	84	68	73
QUAIL HOLLOW	105	98%	2%	65	65	71	59	68
RIDGECREST	65	97%	11%	47	42	57	34	42
RIVERSIDE	139	100%	16%	52	54	57	34	52

District or School	2000			3rd Grade Scores by Major Subject: 2000				
	Students Tested		% Free	(Median Percentile Rank)				
	Count	Pct.	Lunch	Composite	Math	Reading	English	Environ.
3rd Grade								
RIVERTON	112	97%	11%	52	59	59	38	42
ROSAMOND	143	99%	6%	63	68	71	50	62
ROSE CREEK	137	99%	7%	57	59	63	43	52
SANDY	80	86%	30%	51	42	55	38	52
SILVER MESA	66	100%	7%	70	71	70	59	79
SOUTH JORDAN	117	100%	6%	60	65	66	50	68
SOUTHLAND	146	99%	7%	54	52	62	34	62
SPRUCEWOOD	125	100%	6%	61	62	66	43	62
SUNRISE	88	98%	6%	57	62	69	38	52
TERRA LINDA	143	97%	14%	44	48	53	34	35
WELBY	128	97%	2%	57	54	65	50	52
WEST JORDAN	90	97%	14%	51	48	62	34	52
WESTLAND	95	99%	13%	63	59	65	50	73
WESTVALE	134	99%	12%	53	54	57	30	52
WILLOW CANYON	87	98%	5%	61	62	63	50	68
JUAB	151	99%	19%	60	59	69	43	62
MONA	31	100%	29%	60	62	70	43	62
NEPHI	120	99%	21%	60	59	69	43	62
KANE	100	94%	28%	60	62	62	43	73
KANAB	63	94%	30%	64	62	60	50	73
VALLEY	31	100%	44%	57	48	67	38	62
LOGAN	424	97%	23%	57	62	60	43	52
ADAMS	54	95%	40%	41	42	53	27	35
BOWEN, EDITH	51	98%	ERR	73	77	80	63	73
ELLIS	73	96%	39%	55	59	59	50	52
HILLCREST	57	93%	23%	73	77	75	68	73
WILSON	88	98%	20%	57	54	66	34	68
WOODRUFF	101	100%	36%	40	40	43	27	35
MILLARD	232	95%	27%	51	48	65	34	52
DELTA NORTH	75	93%	35%	57	59	69	50	52
DELTA SOUTH	78	99%	27%	54	45	66	38	52
FILLMORE	79	94%	42%	41	48	57	27	35
MORGAN								
MORGAN	133	100%	10%	62	62	71	43	68
MURRAY	490	96%	11%	58	59	66	43	52
GRANT	66	96%	7%	58	54	65	50	52
HORIZON	84	99%	18%	55	59	67	38	52
LIBERTY	50	100%	18%	55	59	66	43	42
LONGVIEW	68	96%	6%	67	71	73	59	62
MCMILLAN	59	98%	16%	55	62	60	38	52
PARKSIDE	76	88%	24%	49	52	48	27	52
VIEWMONT	87	97%	7%	60	54	69	63	62
NEBO	1611	94%	15%	60	68	60	50	68
ART CITY	127	95%	11%	61	68	60	50	73
BARNETT	71	92%	27%	60	54	63	59	62
BROCKBANK	99	95%	21%	52	59	45	43	68
BROOKSIDE	63	93%	14%	68	74	67	63	68
CANYON	138	92%	7%	64	71	65	50	68
GOSHEN	50	96%	30%	50	59	53	34	52
GRANT	43	93%	29%	69	74	65	63	79
LARSEN	103	97%	11%	71	86	66	59	79
MAPLETON	133	99%	7%	66	74	63	59	68

Note: Explanations of headings and other notes are found on page 60

District or School 3rd Grade	2000			3rd Grade Scores by Major Subject: 2000 (Median Percentile Rank)				
	Students Tested	% Free		Composite	Math	Reading	English	Environ.
	Count	Pct.	Lunch					
MT. LOAFER	116	99%	6%	67	68	67	59	68
PARK	62	90%	25%	52	59	50	43	52
PARKVIEW	47	87%	23%	58	71	59	38	52
REES	39	89%	33%	50	62	57	23	52
SAGE CREEK	114	96%	14%	62	77	62	50	62
SALEM	77	96%	13%	56	62	65	43	62
SANTAQUIN	115	95%	23%	45	52	50	34	42
TAYLOR	67	97%	21%	55	65	55	50	62
WESTSIDE	62	93%	24%	55	62	51	43	62
WILSON	85	83%	24%	52	62	57	38	52
NORTH SANPETE	183	96%	34%	42	45	44	27	52
FAIRVIEW	42	100%	21%	42	40	43	34	42
FOUNTAIN GREEN	22	96%	34%	55	59	55	30	73
MORONI	34	87%	49%	34	40	35	23	31
MT. PLEASANT	67	99%	36%	39	54	29	23	52
SPRING CITY	18	100%	36%	62	65	67	63	68
NORTH SUMMIT								
NORTH SUMMIT	79	98%	15%	64	62	70	59	68
OGDEN	896	90%	49%	34	35	40	23	31
BONNEVILLE	51	94%	62%	34	35	40	18	35
DEE	63	68%	87%	19	22	19	12	12
EDISON	72	99%	65%	35	40	37	30	26
GRAMERCY	64	98%	60%	22	22	28	16	26
GRANDVIEW	43	98%	12%	66	65	70	59	68
HILLCREST	70	92%	25%	70	77	71	63	73
LEWIS	55	68%	71%	13	14	17	6	9
LINCOLN	50	93%	50%	28	20	30	21	31
LYNN	48	94%	60%	34	27	39	21	26
MANN, HORACE	70	95%	42%	39	40	44	27	35
MOUNTAIN VIEW	48	89%	76%	16	18	14	8	18
POLK	71	93%	44%	46	45	46	38	52
SMITH, T. O.	85	93%	63%	22	19	19	12	26
TAYLOR, C. H.	58	95%	55%	37	40	48	23	31
WASATCH	48	100%	12%	59	59	67	50	52
PARK CITY	263	89%	6%	70	80	67	59	73
JEREMY RANCH	115	93%	3%	68	80	66	63	68
MCPOLIN	51	72%	20%	56	68	60	34	68
PARKLEYS PARK	97	97%	5%	76	86	73	63	79
PIUTE	19	95%	34%	57	62	57	43	68
CIRCLEVILLE	14	93%	37%	54	62	43	43	68
PROVO	963	92%	27%	53	59	59	38	52
CANYON CREST	79	94%	12%	63	62	71	43	68
EARHART, AMELIA	84	98%	19%	50	59	46	34	52
EDGEMONT	59	97%	13%	61	62	63	43	68
FRANKLIN	72	87%	47%	39	40	45	23	35
GRANDVIEW	83	99%	25%	57	62	60	38	62
JOAQUIN	48	77%	66%	37	42	45	23	31
MAESER	64	84%	56%	40	54	41	30	42
PROVOST	64	89%	35%	49	42	53	34	52
ROCK CANYON	77	99%	21%	68	74	67	50	68
SUNSET VIEW	105	93%	32%	50	59	55	34	42
TIMPANOGOS	59	81%	58%	39	40	41	27	42

District or School 3rd Grade	2000			3rd Grade Scores by Major Subject: 2000 (Median Percentile Rank)				
	Students Tested	% Free		Composite	Math	Reading	English	Environ.
	Count	Pct.	Lunch					
WASATCH	69	97%	17%	61	54	70	50	68
WESTRIDGE	100	97%	22%	57	74	63	38	52
RICH	23	82%	37%	52	52	60	50	52
SOUTH RICH	17	77%	55%	54	45	60	63	52
SALT LAKE CITY	1324	67%	45%	52	59	57	38	52
BACKMAN	38	52%	72%	28	25	29	21	26
BEACON HEIGHTS	60	85%	11%	71	74	69	59	85
BENNION	33	65%	66%	48	68	60	34	35
BENNION ELP	23	96%	15%	85	89	86	68	85
BONNEVILLE	81	95%	3%	72	77	76	63	68
DILWORTH	52	87%	16%	60	65	67	50	73
EDISON	25	32%	77%	29	25	39	21	22
EMERSON	37	67%	36%	49	45	57	34	42
ENSIGN	53	96%	5%	72	71	77	63	79
FRANKLIN	40	45%	82%	25	35	20	14	31
HAWTHORNE	38	84%	40%	44	48	40	34	62
HIGHLAND PARK	72	90%	14%	58	54	62	43	68
INDIAN HILLS	45	96%	2%	59	62	60	50	62
JACKSON	44	63%	77%	29	37	34	23	35
LINCOLN	21	26%	79%	27	37	39	12	12
LOWELL	37	73%	29%	66	83	57	50	73
LOWELL ELP	25	100%	5%	86	86	94	78	85
MEADOWLARK	26	32%	61%	40	42	55	21	31
MOUNTAIN VIEW	24	32%	70%	39	40	53	30	26
NEWMAN	52	63%	42%	32	27	39	21	31
NIBLEY PARK	50	100%	44%	41	45	45	27	35
NORTH STAR	75	69%	45%	47	54	57	34	35
PARKVIEW	64	60%	78%	26	30	32	18	22
RILEY	22	61%	61%	25	25	35	18	22
ROSE PARK	44	50%	53%	37	40	45	23	31
ROSSLYN HEIGHTS	29	97%	3%	73	74	73	68	79
UINTAH	84	99%	3%	66	62	67	50	73
WASATCH	49	77%	12%	67	68	69	59	68
WASHINGTON	24	63%	63%	44	62	51	34	31
WASHINGTON OPEN	22	100%	5%	54	62	50	38	52
WHITTIER	26	45%	66%	39	45	45	27	26
SAN JUAN	229	95%	55%	29	30	35	18	26
BLANDING	83	95%	61%	36	45	44	21	31
BLUFF	24	100%	86%	16	24	12	12	15
MEXICAN HAT	34	94%	70%	16	18	16	9	15
MONTEZUMA	42	95%	66%	19	18	21	9	18
MONTECELLO	42	93%	38%	57	54	59	38	62
SEVIER	353	97%	29%	55	52	60	38	62
ASHMAN	149	96%	34%	57	52	65	43	62
MONROE	110	100%	37%	54	54	57	38	68
SALINA	88	96%	31%	54	52	62	43	52
SOUTH SANPETE	194	92%	30%	60	68	60	43	62
EPHRAIM	64	96%	33%	53	59	59	30	42
GUNNISON VALLEY	63	88%	38%	53	59	59	38	52
MANTI	67	93%	41%	70	77	70	59	73
SOUTH SUMMIT	93	97%	9%	59	62	63	38	68
SOUTH SUMMIT	93	97%	12%	59	62	63	38	68

Note: Explanations of headings and other notes are found on page 60

District or School 3rd Grade	2000			3rd Grade Scores by Major Subject: 2000 (Median Percentile Rank)				
	Students Tested		% Free	Composite	Math	Reading	English	Environ.
	Count	Pct.	Lunch					
TINTIC	15	79%	32%	51	59	57	27	52
EUREKA	13	93%	67%	50	59	57	27	52
TOOELE	750	95%	22%	48	52	57	30	42
DUGWAY	33	89%	18%	44	48	46	30	42
EAST	115	97%	23%	59	62	65	38	62
GRANTSVILLE	127	93%	24%	44	45	51	27	42
HARRIS	91	99%	26%	46	40	60	30	42
NORTHLAKE	131	91%	29%	44	45	53	30	42
SMITH, ANNA	36	100%	77%	17	27	19	14	15
STANSBURY	97	98%	12%	53	54	62	34	52
WEST	115	96%	20%	52	54	60	38	42
UINTAH	441	98%	34%	53	54	57	34	52
ASHLEY	167	98%	31%	60	59	65	43	62
LAPOINT	44	100%	67%	46	59	50	27	42
NAPLES	196	98%	38%	50	59	57	30	52
TODD	34	94%	87%	15	14	13	8	22
WASATCH	251	95%	11%	51	52	62	34	42
HEBER VALLEY	99	90%	22%	46	42	57	34	42
MIDWAY	70	100%	12%	55	48	67	27	52
SMITH, J. R.	82	98%	11%	56	65	63	38	52
WASHINGTON	1353	97%	23%	53	54	57	38	52
BLOOMINGTON	82	99%	6%	56	59	62	43	52
BLOOMINGTON HILLS	95	94%	10%	63	65	66	50	68
DIAMOND VALLEY	56	98%	23%	54	54	63	43	42
DIXIE DOWNS	97	91%	44%	43	52	46	34	35
ENTERPRISE	30	100%	27%	43	48	48	27	31
HURRICANE	67	99%	36%	54	52	65	43	42
LAVERKIN	89	99%	45%	48	48	51	34	52
PANORAMA	90	97%	23%	50	54	53	34	52
RED MOUNTAIN	94	100%	27%	44	48	55	34	35
SANDSTONE	94	99%	NA	47	48	55	30	42
SANTA CLARA	110	97%	8%	62	65	67	50	62
SPRINGDALE	11	100%	0%	32	40	28	30	31
ST. GEORGE EAST	95	92%	40%	47	52	62	30	42
ST. GEORGE WEST	59	95%	39%	41	48	43	30	42

District or School 3rd Grade	2000			3rd Grade Scores by Major Subject: 2000 (Median Percentile Rank)				
	Students Tested		% Free	Composite	Math	Reading	English	Environ.
	Count	Pct.	Lunch					
SUNSET	114	96%	33%	58	59	69	38	52
THREE FALLS	69	99%	23%	56	62	57	50	62
WASHINGTON	95	99%	24%	52	65	55	38	42
WAYNE	40	100%	37%	53	52	45	38	73
LOA	33	100%	39%	50	52	44	38	73
WEBER	2099	97%	12%	56	59	62	38	62
BATES	84	99%	6%	48	45	57	34	52
CHILD, H. GUY	68	100%	11%	63	68	71	43	73
CLUB HEIGHTS	39	87%	58%	48	62	46	30	52
COUNTRY VIEW	142	100%	11%	48	52	60	34	42
FARR WEST	67	99%	16%	53	45	62	43	62
GREEN ACRES	71	99%	10%	57	54	67	38	62
HOOPER	77	99%	10%	57	52	67	50	62
KANESVILLE	74	86%	11%	55	59	57	50	62
LAKEVIEW	66	100%	30%	39	42	35	23	52
LOMOND VIEW	82	100%	2%	66	74	70	50	68
MAJESTIC	100	96%	7%	66	68	70	59	68
MAR LON HILLS	55	89%	18%	54	68	59	43	52
MIDLAND	114	93%	13%	64	65	71	59	62
MUNICIPAL	81	99%	13%	48	59	66	30	31
NORTH OGDEN	63	100%	11%	64	77	67	43	68
NORTH PARK	70	96%	24%	49	48	55	38	62
PIONEER	82	93%	15%	48	52	48	34	42
PLAIN CITY	73	97%	9%	58	54	59	50	62
RIVERDALE	89	98%	22%	57	62	62	38	52
ROOSEVELT	72	94%	30%	42	37	51	27	42
ROY	113	100%	16%	53	62	57	38	52
UINTAH	108	97%	7%	63	68	62	50	73
VALLEY	114	98%	12%	64	62	69	50	73
VALLEY VIEW	79	96%	23%	45	45	53	30	35
WASHINGTON TER	53	87%	27%	61	62	66	38	62
WEST WEBER	61	98%	16%	42	45	48	30	42
Charter School								
PINNACLE CANYON	20	95%	14%	50	52	44	34	52

Note: Explanations of headings and other notes are found on page 60

District or School 5th Grade	2000			2000 Expected Range	Test Scores (Median Percentile Rank) by Major Subject and Year																	
	Students Tested		% Free		Composite			Math			Reading			English			Science			Soc Sci		
	Count	Pct.	Lunch		00	99	98	00	99	98	00	99	98	00	99	98	00	99	98	00	99	98
WASHINGTON	32	73%	63%	19 - 35	49	32	19	49	37	19	49	30	13	47	30	16	46	31	23	51	27	35
WASH. OPEN	19	90%	5%	49 - 69	63	60	72	56	52	64	67	49	73	53	44	56	71	71	71	61	56	85
WHITTIER	24	55%	66%	17 - 34	40	31	21	46	30	23	36	32	16	22	24	12	40	35	31	39	27	23
SAN JUAN DIST	231	97%	55%	24 - 36	23	27	29	25	32	25	21	21	24	20	24	26	31	35	35	23	23	27
BLANDING	90	98%	61%	19 - 37	29	38	32	35	42	30	25	30	30	22	35	26	40	46	40	27	35	23
BLUFF	20	95%	86%	11 - 23	11	12	23	13	11	22	7	11	12	14	20	20	14	23	27	10	10	31
MEXICAN HAT	28	93%	70%	16 - 32	6	10	4	8	22	4	3	5	2	10	9	8	17	12	5	8	8	10
MONTEZUMA	46	98%	66%	17 - 34	14	16	16	17	13	13	9	13	16	14	14	14	20	20	27	14	19	23
MONTECELLO	47	96%	38%	30 - 50	53	57	73	59	52	85	55	52	64	56	53	67	55	65	82	51	61	74
SEVIER DIST	337	99%	29%	39 - 52	50	47	45	56	46	49	49	39	44	47	41	38	65	60	60	44	51	44
MONROE	95	100%	37%	31 - 51	48	46	41	42	46	39	47	42	39	41	44	30	65	55	55	39	39	39
PAHVANT	148	100%	31%	34 - 54	50	42	47	59	44	49	49	37	47	44	35	38	65	55	60	39	44	39
SALINA	92	98%	31%	34 - 54	56	53	55	59	59	59	55	42	49	50	50	47	71	65	65	56	61	51
SOUTH SANPETE	178	91%	30%	38 - 51	52	54	57	59	59	67	55	47	49	41	44	44	60	65	71	56	56	56
EPHRAIM	50	89%	33%	33 - 53	55	44	51	59	59	62	58	47	44	35	35	35	55	40	60	56	35	56
GUNNISON	72	94%	38%	30 - 50	47	55	59	42	46	67	47	47	52	41	53	44	65	77	77	56	61	56
MANTI	56	90%	41%	29 - 48	59	59	57	67	71	71	55	49	52	50	44	47	71	65	71	51	51	51
SOUTH SUMMIT																						
SO SUMMIT	106	98%	12%	45 - 65	54	55	56	56	59	64	49	55	55	50	50	53	65	65	60	56	51	56
TINTIC DIST	14	74%	32%	37 - 50	32	30	29	27	28	25	32	29	30	24	16	24	40	35	55	27	27	19
EUREKA	11	85%	67%	17 - 33	30	23	23	19	27	20	25	29	18	22	9	18	40	35	35	19	16	16
TOOELE DIST	641	95%	22%	43 - 57	41	47	44	42	46	46	39	42	42	38	41	38	55	60	55	39	51	44
DUGWAY	28	97%	18%	41 - 62	54	54	55	49	67	62	55	47	52	47	47	41	60	65	65	65	61	65
EAST	67	96%	23%	39 - 59	55	54	55	52	59	49	49	52	55	50	50	50	65	65	65	61	65	56
GRANTSVILLE	112	85%	24%	38 - 58	36	47	51	30	39	44	33	47	49	30	47	50	60	60	60	31	56	56
HARRIS	76	99%	26%	37 - 57	47	46	44	44	44	49	44	47	42	44	41	44	55	60	60	56	44	39
NORTHLAKE	118	98%	29%	35 - 55	34	46	39	37	44	42	32	39	36	28	41	28	40	60	46	35	44	35
SMITH, ANNA	21	91%	77%	13 - 28	18	8	15	25	8	19	16	4	14	22	14	14	20	9	23	16	10	14
STANSBURY	111	98%	12%	45 - 65	50	55	52	49	59	62	49	52	47	38	53	44	65	65	60	44	61	56
WEST	101	98%	20%	40 - 61	42	42	39	46	46	44	42	36	36	35	33	30	55	55	46	44	35	44
UINTAH DIST	430	97%	34%	35 - 49	46	43	48	46	46	52	42	39	39	44	38	44	65	60	60	44	39	44
DISCOVERY	349	97%	31%	34 - 54	52	51	55	52	52	59	49	47	49	50	44	50	71	71	71	51	44	51
LAPOINT	31	100%	67%	17 - 33	35	26	29	32	19	39	22	26	22	26	20	26	55	31	27	35	35	31
TODD	50	93%	87%	10 - 23	10	16	10	8	14	14	6	13	6	10	16	6	20	23	20	8	16	8
WASATCH DIST	277	97%	11%	50 - 63	49	52	55	49	52	56	49	52	52	47	50	50	65	60	60	44	56	56
HEBER VALLEY	89	94%	22%	39 - 59	47	46	54	44	49	62	44	39	52	41	47	50	65	46	60	44	44	44
MIDWAY	97	99%	12%	45 - 65	47	53	55	49	49	49	42	55	55	47	53	53	60	60	60	51	51	61
SMITH, J. R.	91	98%	11%	46 - 66	58	59	54	64	52	49	58	55	52	60	56	50	65	65	60	44	65	51
WASHINGTON	1415	98%	23%	42 - 56	50	49	47	56	52	49	49	47	44	44	47	44	60	60	60	51	51	44
BLOOMINGTON	95	99%	6%	49 - 69	63	59	51	64	59	49	64	58	49	60	63	50	71	65	65	65	65	51
BLOOMINGTON HILLS	115	100%	10%	46 - 66	57	65	53	67	73	59	55	61	49	53	67	47	65	71	60	56	56	56
DIAMOND VALLEY	53	100%	23%	39 - 59	50	50	51	44	49	56	55	58	49	41	38	44	60	60	46	51	44	51
DIXIE DOWNS	97	98%	44%	27 - 47	35	42	35	42	44	35	33	42	29	28	44	26	35	46	46	35	44	39
ENTERPRISE	35	97%	27%	36 - 57	51	53	53	59	79	59	52	42	52	41	41	47	60	60	65	35	35	39
HURRICANE	140	97%	36%	31 - 51	52	43	50	52	42	46	49	37	49	47	33	53	65	55	60	56	51	44
LAVERKIN	83	97%	45%	27 - 46	44	33	41	44	39	44	39	30	36	38	26	38	55	40	60	39	35	44
PANORAMA	97	99%	23%	39 - 59	48	38	53	56	39	56	42	37	52	44	35	50	46	46	65	51	35	51
PHELPS	10	100%	82%	12 - 25	36	39	36	42	27	35	29	42	32	20	28	41	46	60	40	23	44	44
RED MOUNTAIN	91	100%	27%	36 - 57	42	55	43	42	56	49	44	55	47	38	47	53	60	60	46	39	56	35
SANDSTONE	103	97%	NA	NA	50			59			49			47		65			56			
SANTA CLARA	111	97%	8%	47 - 67	55	61	47	59	71	49	52	58	44	60	56	47	65	65	60	51	56	44
ST. GEORGE EAST	82	96%	40%	29 - 49	44	41	37	46	39	39	39	42	33	35	38	26	60	46	46	39	35	31
ST. GEORGE WEST	79	100%	39%	30 - 49	44	46	41	52	59	44	44	37	32	26	33	33	55	55	46	51	44	44
SUNSET	126	94%	33%	33 - 53	54	56	50	62	64	62	52	44	42	47	50	41	65	65	60	56	74	51
THREE FALLS		NA	23%	NA				56	57			56	52		55	58		71	65		61	56
WASHINGTON	89	98%	24%	38 - 58	45	41	48	46	44	46	39	37	49	41	41	44	55	46	60	51	39	44
WAYNE DIST	37	97%	37%	34 - 47	38	39	56	28	30	52	32	37	49	33	28	44	65	55	77	35	31	65
LOA	33	97%	39%	30 - 49	37	40	55	25	30	52	29	37	52	33	30	44	65	60	77	35	31	65
WEBER DIST	2072	97%	12%	49 - 63	52	52	50	49	52	49	49	49	49	47	47	47	65	65	60	56	56	56
BATES	85	99%	6%	49 - 69	56	53	58	56	52	52	55	52	61	50	53	56	65	71	71	61	56	61

Note: Explanations of headings and other notes are found on page 60.

District or School 5th Grade	2000			2000 Expected Range	Test Scores (Median Percentile Rank) by Major Subject and Year																	
	Students Tested		% Free		Composite			Math			Reading			English			Science			Soc Sci		
	Count	Pct.	Lunch		00	99	98	00	99	98	00	99	98	00	99	98	00	99	98	00	99	98
CHILD, H. GUY	77	100%	11%	46 - 66	54	51	61	62	49	67	49	44	58	53	44	56	60	60	71	51	56	61
CLUB HEIGHTS	53	100%	58%	21 - 38	35	30	21	25	35	19	29	26	18	33	22	14	40	40	27	44	27	16
COUNTRY VIEW	122	98%	11%	46 - 66	41	46	41	37	49	39	47	39	44	38	41	33	60	60	55	39	44	44
FARR WEST	77	99%	16%	43 - 63	50	57	59	49	52	59	44	49	55	50	56	60	65	71	65	51	56	61
GREEN ACRES	89	97%	10%	46 - 66	55	51	52	62	46	59	49	47	47	50	53	44	65	55	60	56	51	56
HOOPER	86	97%	10%	46 - 66	38	50	40	30	52	35	33	44	37	33	47	33	55	60	60	44	51	35
KANESVILLE	102	94%	11%	46 - 66	58	49	59	59	49	59	61	55	55	50	38	47	65	60	65	65	44	61
LAKEVIEW	64	97%	30%	35 - 55	36	38	48	42	44	56	30	37	44	26	35	38	46	40	55	35	39	51
LOMOND VIEW	85	100%	2%	51 - 71	67	63	62	62	59	56	58	61	64	63	63	50	77	77	77	78	74	69
MAJESTIC	117	96%	7%	48 - 68	50	59	63	46	62	59	44	55	64	50	56	60	60	65	71	56	61	69
MAR LON HILLS	43	100%	18%	41 - 62	56	57	54	59	56	56	49	58	52	56	60	50	60	65	60	61	65	56
MIDLAND	93	99%	13%	44 - 65	56	53	52	59	56	59	52	52	49	53	50	41	65	60	60	51	51	56
MUNICIPAL	75	95%	13%	44 - 65	56	47	45	59	44	39	52	44	44	60	50	41	65	60	60	51	51	44
NORTH OGDEN	76	100%	11%	46 - 66	52	61	59	49	64	56	49	55	61	47	60	60	71	71	71	56	65	65
NORTH PARK	44	98%	24%	38 - 58	49	53	53	42	46	49	42	47	49	44	53	47	65	60	71	56	61	51
PIONEER	76	92%	15%	43 - 64	47	54	59	44	59	67	49	55	52	47	50	60	60	55	65	51	56	61
PLAIN CITY	65	96%	9%	47 - 67	64	60	41	67	52	37	67	58	44	56	56	38	71	77	55	69	61	44
RIVERDALE	69	99%	22%	39 - 59	42	46	39	44	52	32	37	44	37	38	44	38	46	55	46	35	44	44
ROOSEVELT	65	97%	30%	35 - 55	46	49	45	44	44	46	44	52	47	41	50	38	65	65	55	44	51	56
ROY	95	94%	16%	43 - 63	39	49	35	42	59	37	36	44	26	38	41	35	55	65	46	39	44	31
UINTAH	109	98%	7%	48 - 68	56	56	60	52	56	56	58	55	55	53	47	50	65	60	65	61	65	69
VALLEY	99	95%	12%	45 - 65	57	53	55	56	46	56	58	58	49	47	41	56	71	71	65	61	56	61
VALLEY VIEW	71	96%	23%	39 - 59	51	41	44	46	39	30	44	36	37	53	50	47	71	55	60	56	35	44
WASH TERRACE	67	100%	27%	36 - 57	38	35	47	42	37	59	26	32	33	30	28	33	55	40	65	35	35	51
WEST WEBER	66	96%	16%	43 - 63	55	57	59	49	59	62	58	58	49	53	44	47	65	65	71	61	61	65
CHARTER SCHOOLS																						
PINNACLE CANY.	20	100%	14%	44 - 64	69	52		67	52		67	42		60	47		77	55		61	56	

Test Scores for Grade 8

Statewide - 8th	33101	94%		NA	54	53	54	58	58	58	53	53	53	50	50	47	58	58	58	58	52	58
ALPINE DIST	3243	97%	13%	53 - 64	58	58	57	66	64	60	53	56	53	50	54	54	62	62	62	58	58	58
AMERICAN FORK	376	99%	16%	44 - 65	59	54	57	76	60	69	48	51	53	47	50	50	58	62	62	58	52	52
CANYON VIEW	364	97%	16%	44 - 65	57	61	59	71	62	60	56	61	59	47	58	54	58	67	67	52	58	58
LAKERIDGE	429	98%	17%	44 - 64	61	61	54	64	64	56	61	59	53	54	58	50	67	67	58	62	62	58
LEHI	397	98%	12%	46 - 67	50	54	50	54	58	45	43	46	43	50	50	54	58	58	58	52	62	62
MOUNTAIN RIDGE	532	99%	5%	50 - 70	64	67	66	73	76	71	61	64	64	62	58	62	67	72	72	62	62	66
OAK CANYON	432	97%	8%	49 - 69	63	59	55	73	69	62	61	59	53	58	58	50	67	62	58	58	58	58
OREM	325	91%	22%	41 - 62	52	56	54	54	60	58	51	56	51	47	50	54	62	62	62	58	52	58
PLEASANT GROVE	388	97%	14%	45 - 66	52	52	53	64	56	58	48	51	48	40	50	47	58	58	58	45	58	58
BEAVER DIST	98	92%	21%	49 - 60	55	55	54	58	54	62	56	53	56	43	47	50	62	58	54	58	58	58
BEAVER	53	93%	17%	44 - 64	58	56	54	62	54	58	51	59	59	43	54	50	72	62	47	62	62	58
MILFORD	31	91%	17%	44 - 64	42	51	45	35	60	52	41	48	51	37	43	34	54	54	42	45	58	45
MINERSVILLE	14	93%	10%	47 - 68	70	51	61	69	60	78	74	59	53	66	43	58	72	67	58	66	40	58
BOX ELDER DIST	785	92%	18%	50 - 61	55	60	55	64	73	62	56	59	53	50	54	47	58	58	58	52	58	52
BEAR RIVER	340	93%	18%	43 - 64	53	56	48	56	64	54	51	59	48	50	54	47	58	62	58	52	58	52
BOX ELDER	441	91%	16%	44 - 65	60	62	57	73	78	73	56	59	53	54	50	47	54	58	58	52	58	52
CACHE DIST	953	97%	14%	52 - 63	61	60	58	71	71	64	59	59	56	54	54	54	67	62	67	62	58	58
NO CACHE CNTR	486	99%	14%	45 - 66	60	60	58	64	69	62	56	56	59	58	54	54	62	62	67	58	58	58
SO CACHE CNTR	467	96%	13%	46 - 66	64	60		74	74		59	59		54	50		72	67		62	58	
CARBON DIST	325	99%	27%	46 - 57	47	44	47	50	45	45	46	43	46	40	40	43	54	47	47	45	45	52
EAST CARBON	28	100%	51%	26 - 46	19	37	35	12	27	37	26	24	43	10	21	34	16	26	34	24	93	32
HELPER	76	100%	21%	41 - 62	45	35	44	47	25	33	39	34	43	43	28	43	58	42	54	45	36	52
MONT HARMON	221	99%	21%	41 - 62	49	50	49	58	56	52	48	46	48	40	47	43	54	54	54	52	52	52
DAGGETT DIST																						
MANILA	14	100%	12%	46 - 67	48	53	58	62	69	66	51	36	51	31	40	43	47	47	58	40	58	52
DAVIS DIST	4128	96%	11%	54 - 65	59	57	57	64	62	62	59	56	53	54	54	54	62	62	58	58	58	58
BOUNTFUL	256	98%	9%	48 - 68	57	61	54	60	66	62	53	61	46	54	62	50	62	62	58	58	62	62
CENTERVILLE	351	96%	5%	50 - 70	61	64	61	69	74	69	59	61	61	58	66	58	67	67	62	62	66	66

Note: Explanations of headings and other notes are found on page 60.

District or School 8th Grade	2000			2000 Expected Range	Test Scores (Median Percentile Rank) by Major Subject and Year																	
	Students Tested		% Free Lunch		Composite			Math			Reading			English			Science			Soc Sci		
	Count	Pct.			00	99	98	00	99	98	00	99	98	00	99	98	00	99	98	00	99	98
WENDOVER	31	89%	60%	22 - 41	23	19	16	29	20	13	18	20	8	23	16	12	26	22	19	28	24	28
UINTAH DIST	472	98%	34%	43 - 54	47	48	50	47	54	56	48	43	48	43	47	47	58	54	54	45	45	45
VERNAL JUNIOR	415	98%	24%	40 - 61	51	50	52	54	56	58	53	48	53	47	50	50	58	54	54	52	45	52
WEST MIDDLE	57	98%	80%	15 - 31	21	23	29	20	23	25	19	20	27	16	16	21	26	30	34	24	24	32
WASATCH																						
WASATCH	280	96%	12%	46 - 67	53	54	61	52	56	64	48	53	59	50	58	58	62	62	67	52	45	62
WASHINGTON	1342	95%	23%	48 - 59	51	54	53	52	58	58	51	53	53	47	50	50	54	58	54	52	52	58
DIXIE	284	95%	22%	41 - 62	51	54	55	50	56	60	56	56	56	50	50	54	54	58	58	52	58	58
ENTERPRISE	43	88%	25%	39 - 60	58	46	54	78	56	71	56	48	56	43	43	58	42	47	47	40	45	40
HURRICANE	226	91%	30%	37 - 57	45	50	45	43	50	45	43	48	46	47	50	43	54	54	42	45	52	52
PINE VIEW	393	99%	17%	44 - 64	51	55	58	56	60	62	53	56	56	47	50	54	58	54	62	52	58	62
SNOW CANYON	388	96%	20%	42 - 63	51	56	51	54	64	54	51	56	51	47	50	43	54	58	54	52	52	52
WAYNE DIST																						
WAYNE	37	97%	34%	35 - 55	53	57	50	62	56	71	46	59	41	54	62	50	58	67	58	40	45	40
WEBER DIST	2127	98%	12%	53 - 64	53	51	53	56	54	56	51	48	51	50	47	50	58	58	58	58	58	58
BELL, T. H.	208	95%	22%	41 - 62	43	44	45	41	41	41	46	46	46	37	37	43	54	47	54	45	52	52
NORTH ODGEN	407	99%	6%	50 - 70	62	56	65	66	52	71	59	51	59	62	50	54	62	62	67	66	74	74
ROCKY MTN	347	99%	9%	48 - 68	48	56	55	45	60	58	53	56	56	43	54	54	54	62	58	52	58	58
ROY	270	96%	15%	45 - 65	42	48	41	50	54	39	41	46	46	37	43	40	42	54	47	45	45	45
SAND RIDGE	229	97%	14%	45 - 66	52	44	52	52	47	56	53	46	53	50	40	50	58	47	58	62	52	58
SNOW CREST	116	99%	9%	48 - 68	68	62	59	79	66	54	64	59	56	66	54	54	72	72	62	66	62	66
SO ODGEN	260	99%	13%	46 - 66	56	55	57	66	66	69	53	46	48	50	47	54	62	62	62	58	62	62
WAHLQUIST	285	99%	9%	48 - 68	46	48	50	50	50	50	39	43	51	43	43	47	54	54	54	58	58	58
CHARTER SCHOOLS																						
PINNACLE CNYN	17	94%	14%	45 - 66	68			73			64			50			80			66		
CENTER CITY	17	100%	NA	NA	46			45			53			25			47			45		

Test Scores for Grade 11

Statewide - 11th	32702	91%		NA	59	57	58	68	68	68	60	60	60	47	47	53	62	62	62	62	52	52
ALPINE DIST	3236	93%	13%	55 - 65	62	64	64	73	73	73	65	65	65	53	53	53	67	67	67	62	62	62
ALPINE LIFE & LRN	93	91%	NA	NA	39	52	32	38	57	11	37	55	55	26	53	30	53	62	27	33	42	33
AMERICAN FORK	324	89%	15%	49 - 65	62	62	58	73	68	68	65	60	60	47	53	47	73	73	67	62	62	52
LEHI	381	98%	8%	53 - 69	57	59	61	68	68	68	55	60	65	47	47	53	67	62	62	52	52	62
LONE PEAK	532	94%	4%	55 - 71	65	64	65	73	73	68	65	69	65	53	59	59	73	67	67	62	62	62
MOUNTAIN VIEW	438	91%	13%	50 - 66	59	58	60	68	68	68	65	65	65	53	53	53	67	62	62	52	52	52
OREM	466	93%	10%	52 - 67	64	68	66	68	73	73	65	69	65	53	59	59	67	73	67	68	68	62
PLEASANT GROVE	523	95%	8%	53 - 69	61	64	61	73	77	73	60	65	60	47	53	47	67	67	67	62	62	62
TIMPANOGOS	479	88%	11%	51 - 67	69	64	65	80	77	73	69	65	65	59	53	53	73	73	73	68	62	62
BEAVER DIST	96	92%	21%	52 - 62	54	62	59	68	77	73	50	55	55	47	53	47	62	73	67	42	62	52
BEAVER	62	89%	17%	48 - 64	56	63	55	73	80	68	55	50	50	47	53	47	62	73	67	52	68	52
MILFORD	34	100%	17%	48 - 64	49	58	62	57	63	80	41	60	60	47	47	53	62	62	67	42	62	42
BOX ELDER DIST	853	89%	18%	53 - 63	58	57	58	73	68	68	60	60	60	47	47	53	62	62	62	52	52	52
BEAR RIVER	352	86%	10%	52 - 67	58	57	59	73	68	73	55	55	55	47	47	53	62	67	67	52	52	52
BOX ELDER	477	92%	13%	50 - 66	60	57	60	68	68	68	65	60	65	53	53	53	62	53	62	52	52	52
CACHE DIST	956	94%	14%	55 - 65	60	57	62	68	68	73	60	60	65	47	47	53	67	62	67	62	52	62
CACHE	23	77%	NA	NA	27	34	56	31	38	57	22	34	55	11	30	35	21	40	73	42	33	62
MTN CREST	424	92%	9%	52 - 68	63	58	60	73	73	68	60	60	60	53	47	47	67	62	67	68	52	62
SKY VIEW	509	96%	11%	51 - 67	57	58	62	68	68	73	60	60	65	47	47	53	67	67	67	52	52	62
CARBON DIST	328	94%	27%	49 - 59	51	54	50	63	63	57	45	50	50	41	47	41	62	53	62	52	52	52
CARBON	298	94%	13%	50 - 66	51	54	52	63	63	57	50	55	50	41	47	47	62	53	62	52	52	52
EAST CARBON	30	94%	51%	29 - 44	47	30	41	57	31	57	41	30	37	35	30	26	62	27	53	52	33	42
DAGGETT DIST																						
MANILA	19	100%	12%	51 - 66	45	53	57	57	73	68	41	41	55	35	47	53	53	53	40	42	42	68
DAVIS DIST	4206	93%	11%	56 - 66	62	61	61	73	68	68	60	65	60	53	53	53	67	67	67	62	62	62
BOUNTIFUL	491	97%	5%	55 - 70	67	66	65	77	77	73	65	69	65	59	59	53	73	67	67	68	62	68
CLEARFIELD	582	89%	13%	50 - 66	56	56	53	63	68	63	55	60	55	47	47	47	62	53	53	52	52	52
DAVIS	751	97%	4%	55 - 71	68	67	67	77	73	77	69	69	69	53	59	59	73	67	67	68	68	68
LAYTON	592	95%	9%	52 - 68	58	58	60	68	63	68	60	65	60	47	53	53	62	67	62	62	52	62

Note: Explanations of headings and other notes are found on page 60.

District or School 11th Grade	2000			2000 Expected Range	Test Scores (Median Percentile Rank) by Major Subject and Year																	
	Students Tested		% Free Lunch		Composite			Math			Reading			English			Science			Soc Sci		
	Count	Pct.			00	99	98	00	99	98	00	99	98	00	99	98	00	99	98	00	99	98
MOUNTAIN	30	28%	25%	43 - 59	30	21	32	38	31	38	30	34	27	18	8	26	33	21	27	27	15	27
NORTHRIDGE	664	93%	7%	54 - 69	57	57	57	63	63	63	60	60	60	47	47	47	62	62	62	52	52	52
VIEWMONT	593	99%	4%	55 - 71	66	68	64	77	80	77	65	69	65	59	59	53	73	67	67	62	68	62
WOODS CROSS	423	94%	6%	54 - 70	64	60	64	73	73	73	65	60	60	59	53	59	62	62	67	62	62	62
DUCHESNE DIST	329	91%	33%	47 - 57	49	51	52	63	57	57	45	50	50	35	41	35	62	53	62	42	52	52
ALTAMONT	38	100%	17%	48 - 64	56	65	59	73	80	68	55	55	60	47	59	41	67	73	67	52	62	62
DUCHESNE	38	90%	26%	42 - 59	59	59	62	73	73	77	55	55	60	47	47	53	53	53	62	68	68	62
TABIONA	15	100%	38%	35 - 51	46	50	41	68	68	50	34	41	37	41	35	22	53	53	62	33	52	33
UNION	230	89%	27%	42 - 58	48	47	46	63	57	57	45	45	45	30	30	35	62	53	53	42	42	42
EMERY DIST	242	96%	26%	50 - 60	56	52	53	63	63	63	55	55	55	47	47	53	62	53	53	52	42	52
EMERY	227	96%	15%	49 - 65	56	53	53	63	63	63	55	55	55	47	53	53	62	53	53	52	42	52
GREEN RIVER	15	100%	27%	42 - 58	59	48	62	63	73	73	50	50	69	65	30	53	67	33	53	62	42	68
GARFIELD DIST	84	97%	29%	48 - 59	64	44	54	73	68	68	65	45	50	47	35	41	62	40	53	73	42	52
BRYCE VALLEY	22	100%	25%	43 - 59	53	47	61	50	57	68	55	45	50	30	35	41	62	53	67	68	52	68
ESCALANTE	22	100%	27%	42 - 58	58	46	52	63	73	50	60	37	65	47	22	53	53	62	40	68	42	52
PANGUITCH	40	93%	20%	46 - 62	70	41	49	86	68	68	73	45	50	53	35	41	62	33	53	73	33	42
GRAND DIST																						
GRAND	117	93%	24%	44 - 60	54	50	54	63	57	57	50	45	55	35	35	41	67	53	62	62	52	52
GRANITE DIST	4505	87%	22%	51 - 62	56	57	57	68	68	68	55	55	55	47	53	53	62	62	62	52	52	52
COTTONWOOD	507	87%	6%	54 - 70	62	67	65	73	73	68	60	65	65	53	59	59	67	67	67	62	68	62
CYPRUS	420	86%	15%	49 - 65	47	49	53	57	57	57	45	50	50	41	41	47	53	53	62	42	42	42
GRANGER	433	79%	19%	47 - 63	43	47	53	57	63	63	41	45	45	35	41	47	40	53	53	42	42	52
GRANITE	265	84%	25%	43 - 59	39	40	44	50	50	57	34	37	37	35	30	30	40	40	53	42	42	42
HUNTER	641	89%	14%	49 - 65	53	53	54	63	63	63	50	50	50	47	47	47	53	53	62	52	52	52
KEARNS	594	86%	16%	48 - 64	47	49	51	63	57	57	45	50	50	41	41	41	53	53	62	42	42	42
OLYMPUS	490	96%	5%	55 - 70	69	69	69	80	77	77	65	69	69	59	59	59	73	73	73	68	68	68
SKYLINE	530	97%	2%	57 - 72	73	73	72	80	80	80	73	73	69	65	65	65	77	77	77	73	73	73
TAYLORSVILLE	583	83%	9%	52 - 68	58	61	59	68	68	68	55	60	60	53	53	53	67	62	62	52	62	62
IRON DIST	494	92%	25%	50 - 60	57	53	56	68	63	63	55	50	55	41	41	47	67	53	67	52	52	52
CANYON VIEW	189	91%	23%	44 - 60	50	54	54	63	63	63	45	50	50	35	47	41	62	62	62	42	42	52
CEDAR CITY	232	94%	15%	49 - 65	61	51	59	68	57	68	60	50	60	47	47	53	73	40	67	52	52	52
PAROWAN	70	100%	20%	46 - 62	59	53	60	68	57	50	55	45	60	53	35	41	62	67	67	62	62	73
JORDAN DIST	5284	93%	10%	57 - 67	63	63	63	68	68	68	60	65	60	53	53	53	67	67	67	62	62	62
ALTA	733	96%	3%	56 - 71	64	66	65	73	73	73	65	65	65	53	59	59	67	67	67	62	62	62
BINGHAM	628	96%	3%	56 - 71	67	66	60	73	73	68	65	60	55	59	59	53	73	73	67	68	68	62
BRIGHTON	714	91%	3%	56 - 71	70	69	71	73	73	73	73	69	73	59	65	65	73	73	73	73	68	73
COPPER HILLS	567	92%	9%	52 - 68	57	59	56	63	68	63	55	60	55	47	53	47	62	67	62	52	52	52
HILLCREST	559	96%	13%	50 - 66	56	61	63	63	68	73	50	60	60	47	47	53	62	67	67	62	62	62
JORDAN	693	92%	9%	52 - 68	65	66	59	73	73	63	65	65	60	53	59	53	67	67	62	68	62	52
RIVERTON	638	95%	6%	54 - 70	58	61		63	68		60	65		47	53		62	67		62	62	
WEST JORDAN	665	88%	10%	52 - 67	58	59	57	68	68	63	60	60	60	53	53	47	62	67	62	52	52	52
JUAB DIST																						
JUAB	134	97%	14%	49 - 65	56	62	54	68	73	63	55	60	50	41	47	53	62	67	62	62	62	52
KANE DIST	120	90%	28%	49 - 59	56	56	47	57	57	57	55	60	50	47	35	41	62	67	40	62	68	52
KANAB	66	85%	15%	49 - 65	51	54	44	63	50	57	50	60	50	47	41	35	53	53	40	42	62	42
VALLEY	47	100%	30%	40 - 56	58	63	51	57	57	57	60	50	50	41	30	47	62	85	40	68	88	62
LOGAN DIST	354	88%	23%	51 - 61	64	66	63	73	73	68	65	65	65	53	53	59	67	73	62	68	68	62
LOGAN	331	90%	16%	48 - 64	67	67	66	73	73	73	69	65	69	53	53	59	73	73	62	68	68	68
MILLARD DIST	275	96%	27%	49 - 59	60	57	56	73	73	68	60	55	55	53	47	47	67	62	62	52	52	52
DELTA	183	97%	19%	47 - 63	61	60	63	77	77	77	60	55	60	53	53	53	67	67	67	52	52	62
MILLARD	92	94%	23%	44 - 60	59	47	45	68	57	57	60	45	41	53	41	35	67	53	53	52	42	42
MORGAN DIST																						
MORGAN	171	96%	4%	55 - 71	64	59	67	80	73	77	65	55	65	53	47	59	73	67	67	62	52	68
MURRAY DIST	474	94%	11%	56 - 66	57	60	65	68	73	73	55	60	65	47	53	53	67	67	73	52	52	62
CREEKSIDE	49	82%	NA	NA	27	40	36	31	50	38	30	37	37	14	35	30	27	40	33	27	33	42
MURRAY	425	96%	6%	54 - 70	59	61	66	73	73	77	60	60	65	47	53	59	67	73	73	52	52	62
NEBO DIST	1196	85%	15%	54 - 65	57	57	60	68	68	68	60	60	60	47	47	53	62	62	62	52	52	62
PAYSON	346	85%	13%	50 - 66	57	56	57	68	68	63	55	60	60	47	47	47	62	62	62	52	52	52
SPANISH FORK	464	84%	10%	52 - 67	56	56	61	68	63	68	60	55	60	41	47	53	62	62	67	52	52	62

Note: Explanations of headings and other notes are found on page 60.

District or School 11th Grade	2000			2000 Expected Range	Test Scores (Median Percentile Rank) by Major Subject and Year																	
	Students Tested		% Free		Composite			Math			Reading			English			Science			Soc Sci		
	Count	Pct.	Lunch	00	99	98	00	99	98	00	99	98	00	99	98	00	99	98	00	99	98	
SPRINGVILLE	371	89%	10%	52 - 67	65	62	61	73	68	68	65	65	65	53	53	53	67	67	67	62	68	62
NORTH SANPETE																						
NORTH SANPETE	193	100%	29%	41 - 57	43	51	46	57	63	57	41	50	50	41	41	35	40	62	53	33	42	42
NORTH SUMMIT																						
NORTH SUMMIT	79	95%	8%	53 - 69	60	55	59	68	63	63	55	50	60	47	47	41	67	67	73	62	52	62
OGDEN DIST	821	89%	49%	40 - 50	41	42	43	50	50	50	41	45	45	30	30	35	40	40	40	42	42	42
BEN LOMOND	338	93%	37%	36 - 52	40	44	43	57	57	57	41	41	45	26	35	35	40	40	40	33	42	42
OGDEN	355	90%	45%	32 - 47	52	49	54	57	57	57	45	50	60	35	35	47	53	53	53	62	52	52
WASHINGTON	99	89%	49%	30 - 45	31	29	24	38	31	31	34	30	24	22	22	14	27	27	21	33	27	27
PARK CITY DIST																						
PARK CITY	281	92%	0%	58 - 73	69	69	65	77	73	73	69	69	65	59	59	59	73	77	67	73	73	68
PIUTE DIST																						
PIUTE	46	100%	33%	38 - 54	53	49	51	63	57	63	55	37	50	41	41	41	62	62	53	52	52	42
PROVO DIST	894	87%	27%	49 - 59	65	65	63	73	73	77	65	65	65	53	53	53	67	67	67	62	62	62
PROVO	403	87%	21%	45 - 61	58	58	62	73	73	77	65	65	60	47	47	47	62	62	67	52	52	62
TIMPVIEV	423	90%	15%	49 - 65	70	70	70	77	80	77	69	73	69	59	59	59	77	73	73	68	68	68
RICH DIST																						
RICH	44	96%	27%	42 - 58	62	43	59	68	50	68	65	50	65	53	30	53	62	40	67	62	33	52
SALT LAKE CITY	1335	78%	45%	41 - 52	58	56	57	63	68	63	60	60	60	47	41	47	62	62	62	62	52	52
EAST	402	84%	25%	43 - 59	60	62	58	63	68	63	65	65	65	53	53	47	62	67	62	68	62	62
HIGHLAND	358	64%	35%	37 - 53	65	58	57	73	68	68	65	60	60	53	41	47	73	62	62	68	62	52
HORIZONTE	145	78%	28%	41 - 57	26	25	29	38	31	31	27	24	30	18	14	18	27	27	33	21	27	27
WEST	430	85%	27%	42 - 58	64	61	60	68	73	68	65	60	65	47	47	47	67	67	67	68	62	62
SAN JUAN DIST	210	96%	55%	37 - 47	36	37	40	50	57	57	34	37	34	26	30	30	40	33	40	33	33	42
MONTICELLO	46	94%	28%	41 - 57	67	55	56	77	68	57	69	50	55	59	47	47	73	62	62	68	42	62
MONUMENT VALLEY	37	100%	75%	18 - 30	21	21	17	31	38	24	15	15	13	18	18	11	27	16	16	27	27	27
SAN JUAN	86	96%	38%	35 - 51	42	48	55	57	63	68	41	45	55	30	35	41	40	53	62	42	42	62
WHITE HORSE	31	94%	78%	17 - 29	22	21	21	31	31	38	15	11	17	18	26	22	27	16	21	27	21	21
SEVIER DIST	369	95%	29%	48 - 59	50	52	49	63	68	63	41	45	50	41	47	41	62	62	53	42	42	42
CEDAR RIDGE	12	71%	49%	30 - 45	47	35	36	38	38	38	50	34	45	41	26	30	62	62	33	42	27	33
NORTH SEVIER	90	97%	22%	45 - 61	45	57	52	63	73	73	41	55	45	35	47	35	62	62	62	33	52	52
RICHFIELD	175	96%	24%	44 - 60	52	49	50	63	63	57	41	45	50	41	47	47	67	53	53	42	42	42
SO SEVIER	92	98%	26%	42 - 59	45	52	43	63	68	57	41	41	45	41	41	35	40	67	40	42	52	42
SOUTH SANPETE	202	89%	30%	48 - 58	53	48	58	68	63	68	50	50	60	41	41	47	62	53	67	52	42	52
GUNNISON VALLEY	83	87%	19%	47 - 63	50	44	54	68	57	68	55	45	45	41	41	41	53	40	73	42	42	52
MANTI	119	89%	21%	45 - 61	55	56	59	68	68	68	50	55	60	41	47	47	62	62	62	62	52	52
SOUTH SUMMIT																						
SO SUMMIT	90	85%	8%	53 - 69	54	59	53	68	68	68	55	50	50	47	47	53	67	67	53	42	62	42
TINTIC DIST	22	85%	32%	47 - 57	60	49	50	73	68	57	41	55	37	47	41	41	73	53	67	68	42	52
TINTIC	17	85%	31%	39 - 56	62	51	44	73	68	50	50	60	37	59	41	35	73	53	62	62	42	42
TOOELE DIST	554	90%	22%	51 - 62	48	50	53	57	57	63	50	50	50	41	41	41	53	62	62	42	42	42
DUGWAY	20	74%	15%	49 - 65	70	49	62	77	57	73	65	37	60	53	35	41	85	67	81	73	52	62
GRANTSVILLE	158	96%	12%	51 - 66	48	49	49	57	50	57	50	50	45	41	41	41	53	62	62	42	42	42
TOOELE	332	89%	11%	51 - 67	53	54	56	57	63	63	55	55	55	47	47	47	53	62	62	52	42	52
WENDOVER	19	73%	60%	24 - 39	24	22	30	50	38	38	15	13	24	18	14	22	21	27	40	27	27	27
UINTAH DIST	428	94%	34%	46 - 57	52	51	56	63	63	68	50	45	55	41	41	47	53	62	62	52	52	52
UINTAH	402	95%	17%	48 - 64	54	54	57	63	63	68	50	50	55	41	41	47	62	62	67	52	52	52
WASATCH DIST	258	92%	11%	56 - 66	57	52	56	68	63	63	60	45	55	47	41	47	67	62	67	52	42	52
WASATCH	247	92%	5%	55 - 70	58	52	56	73	63	63	60	45	55	47	41	47	67	62	67	52	42	52
WASHINGTON	1204	88%	23%	51 - 61	59	57	57	68	68	68	60	60	55	47	47	47	62	62	62	62	52	52
DIXIE	267	87%	11%	51 - 67	58	59	57	63	68	68	55	65	60	47	53	47	67	62	62	62	52	52
ENTERPRISE	45	87%	25%	43 - 59	57	52	48	68	73	57	55	50	55	47	47	47	73	53	40	62	42	42
HURRICANE	186	91%	25%	43 - 59	58	60	63	68	73	68	55	60	60	47	47	53	62	67	67	62	62	62
MILLCREEK	34	65%	31%	39 - 56	23	30	30	24	38	38	19	27	37	14	26	22	33	33	33	27	27	27
PINE VIEW	330	90%	14%	49 - 65	61	62	57	73	68	63	60	65	55	53	53	47	62	67	67	62	62	52
SNOW CANYON	342	90%	15%	49 - 65	61	60	56	68	68	68	65	60	55	53	53	47	62	62	62	62	62	52

Note: Explanations of headings and other notes are found on page 60.

District or School 11th Grade	2000			2000 Expected Range	Test Scores (Median Percentile Rank) by Major Subject and Year																	
	Students Tested		% Free Lunch		Composite			Math			Reading			English			Science			Soc Sci		
	Count	Pct.			00	99	98	00	99	98	00	99	98	00	99	98	00	99	98	00	99	98
WAYNE DIST																						
WAYNE	39	100%	33%	38 - 54	51	57	54	68	68	63	45	55	55	47	47	41	53	67	53	42	52	52
WEBER DIST	2102	95%	12%	56 - 66	57	56	59	68	68	68	55	55	60	53	47	53	62	62	62	52	52	52
BONNEVILLE	478	97%	10%	52 - 67	62	60	62	68	68	68	65	60	69	53	47	53	67	62	62	62	62	52
FREMONT	593	96%	6%	54 - 70	56	54	57	68	68	68	50	50	55	47	41	53	62	62	62	52	52	52
ROY	472	95%	10%	52 - 67	56	52	56	63	63	68	50	55	55	47	47	47	67	53	62	52	42	52
WEBER	547	95%	3%	56 - 71	63	59	62	73	68	68	65	60	60	53	47	53	67	62	62	68	62	62
CHARTER SCHOOLS																						
TUACAHN HIGH	37	97%	0%	58 - 73	65			57			69			59			73			73		
UINTAH RIVER	17	85%	0%	58 - 73	21			24			24			18			21			15		

Notes: % Free Lunch - percentage of previous year's students receiving free or reduced price lunch.

The 2000 Expected Range is the "expected range" for the 2000 complete battery. The expected range is based on the percentage of students that are low income. The greater the percentage of the student body qualifying for free school lunch, the lower average school test scores tend to be. The expected range provides a guide for how schools with similar socio-economic profiles would likely score on the 2000 complete battery. When a school scores considerably better or worse than the midpoint of the expected range, then other factors should be considered to explain the success or failure of the students on such a standardized test.

The complete battery for the Ninth Edition, is an unweighted average across all subtests.

A score of 56 means that the median score for that school was at the 56th percentile; that is, the typical (middle) student in that school scored better than 56% of the students who took the test nationally when it was "normed."

Results for schools with fewer than 15 students tested should be interpreted with caution. The characteristics and achievement of individual students in such small schools may distort seriously the group statistics.

Source: Utah State Office of Education, The Utah Statewide Testing Program, annual reports.