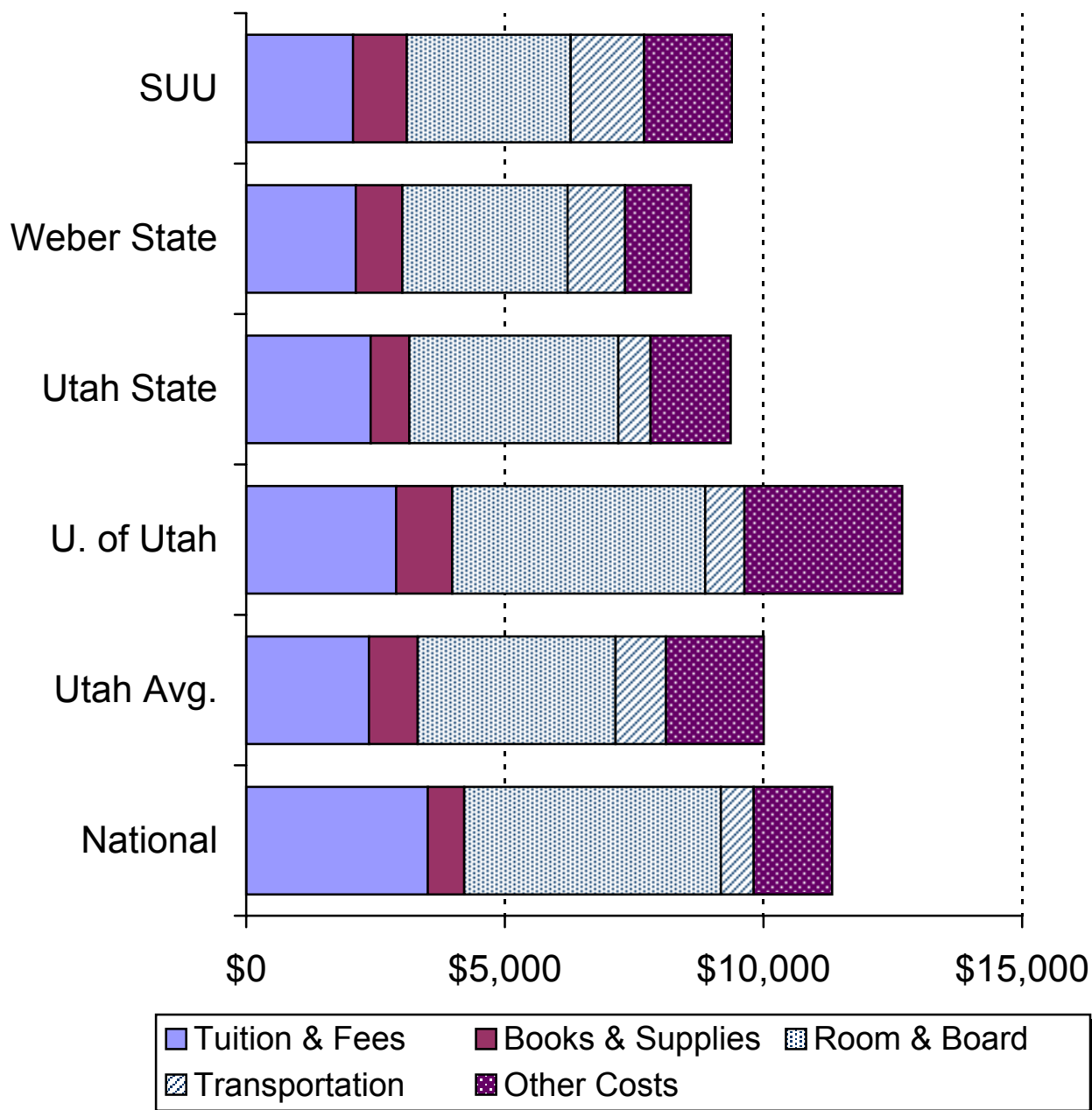


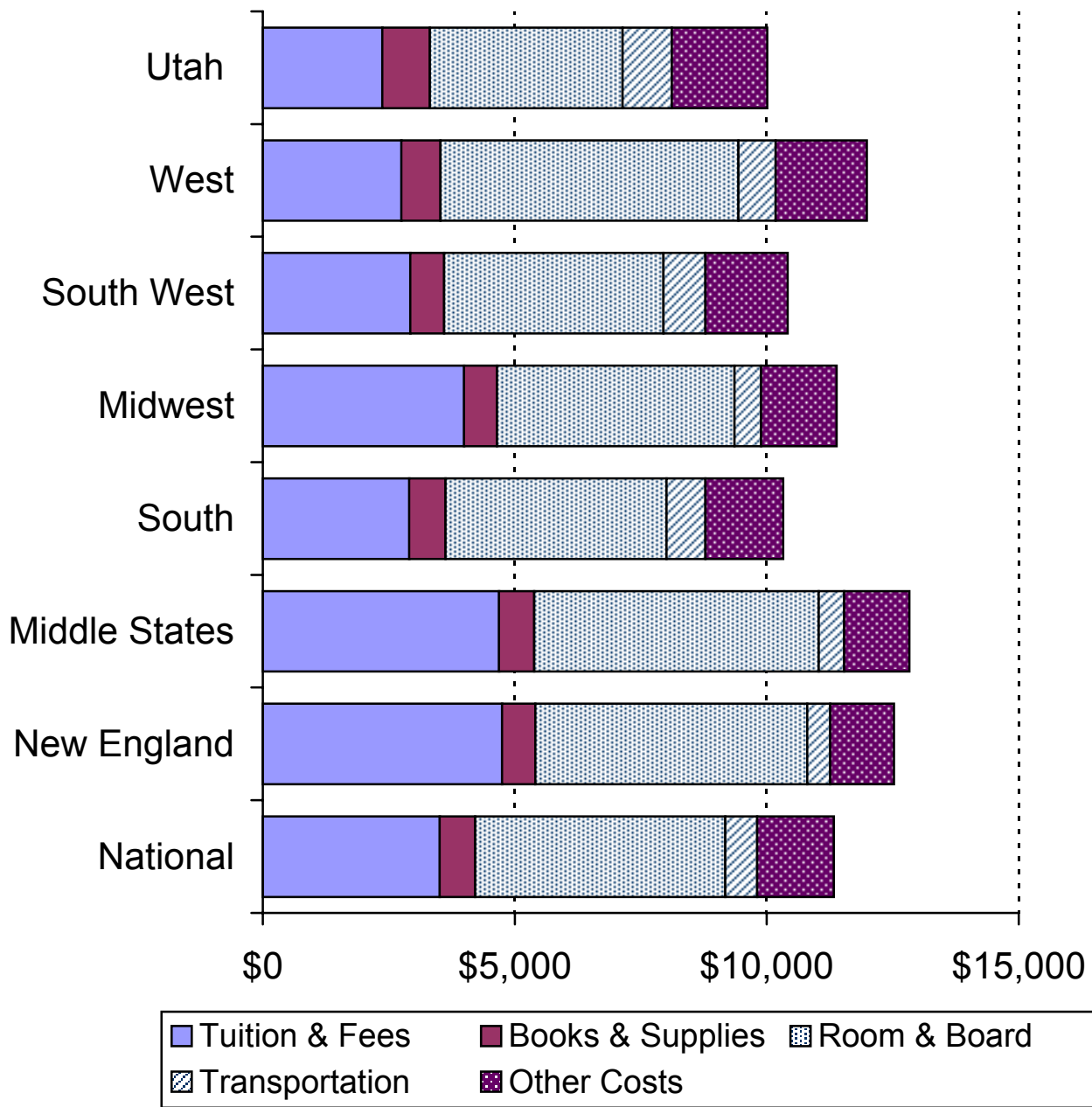
# Annual Total Costs of Attendance

## *Utah Four-Year Public Institutions*



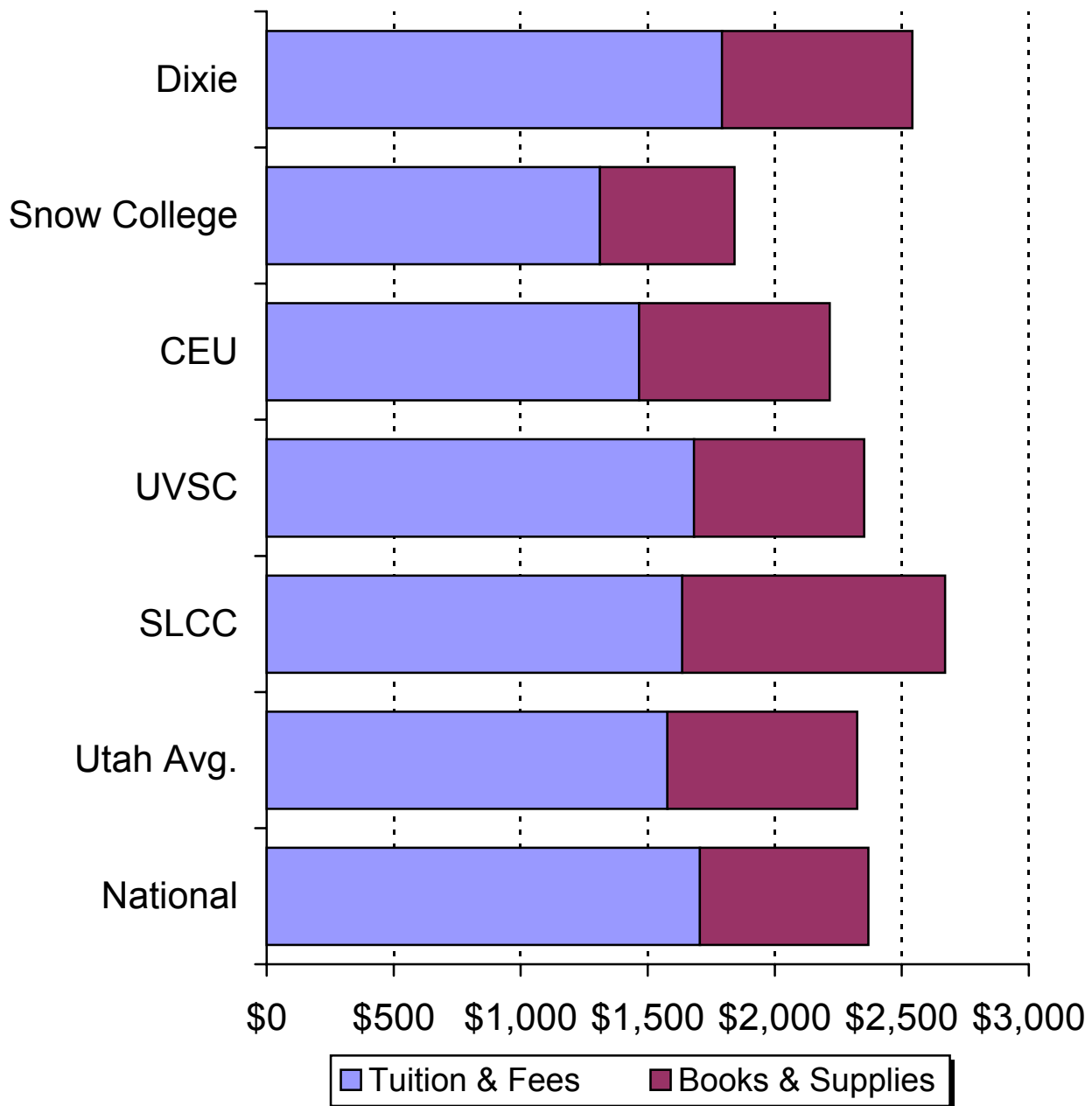
# Annual Total Costs of Attendance

## *Four-Year Public Institutions*



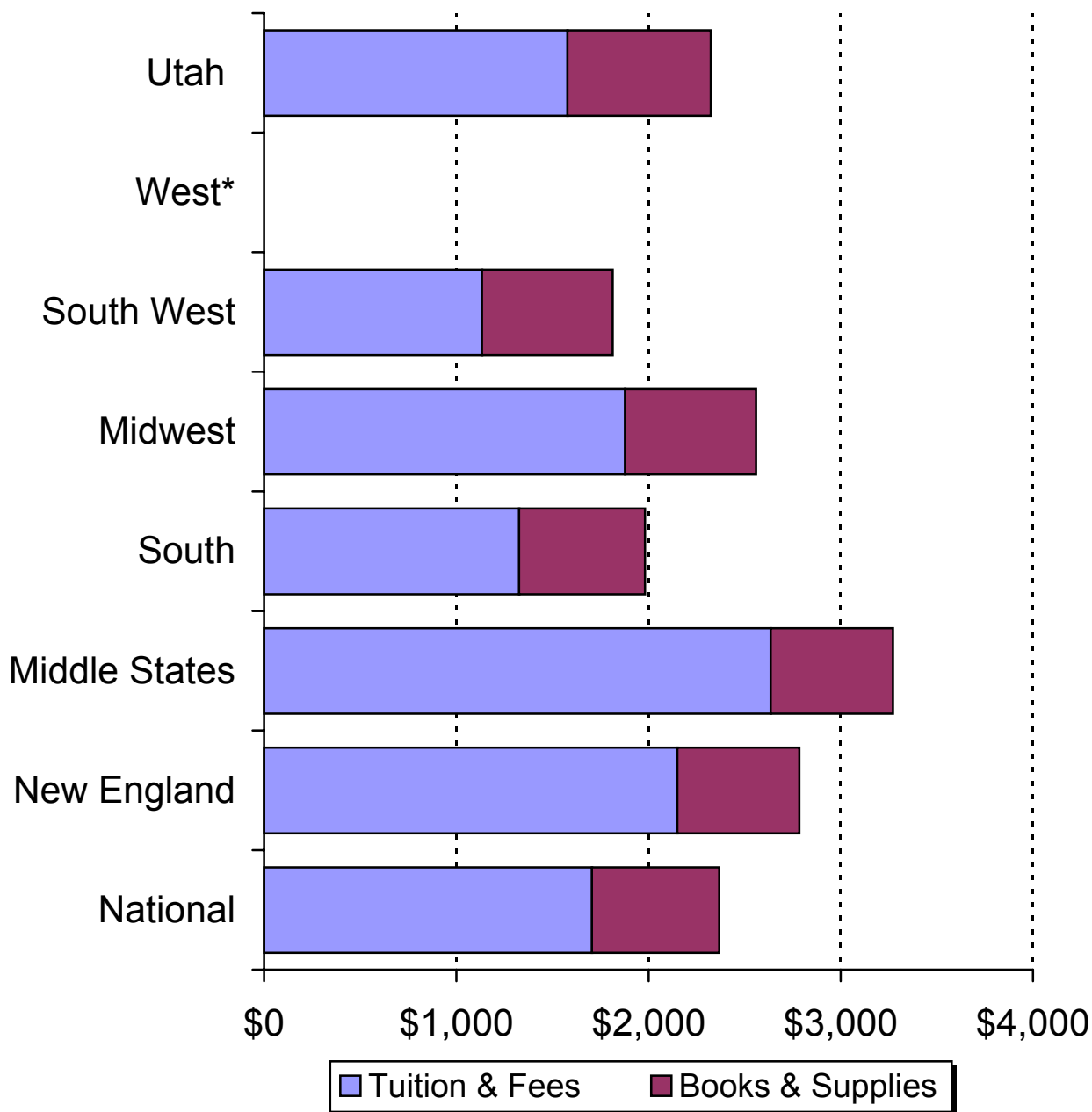
# Annual Costs of Attendance

## *Utah Two-Year Public Institutions*



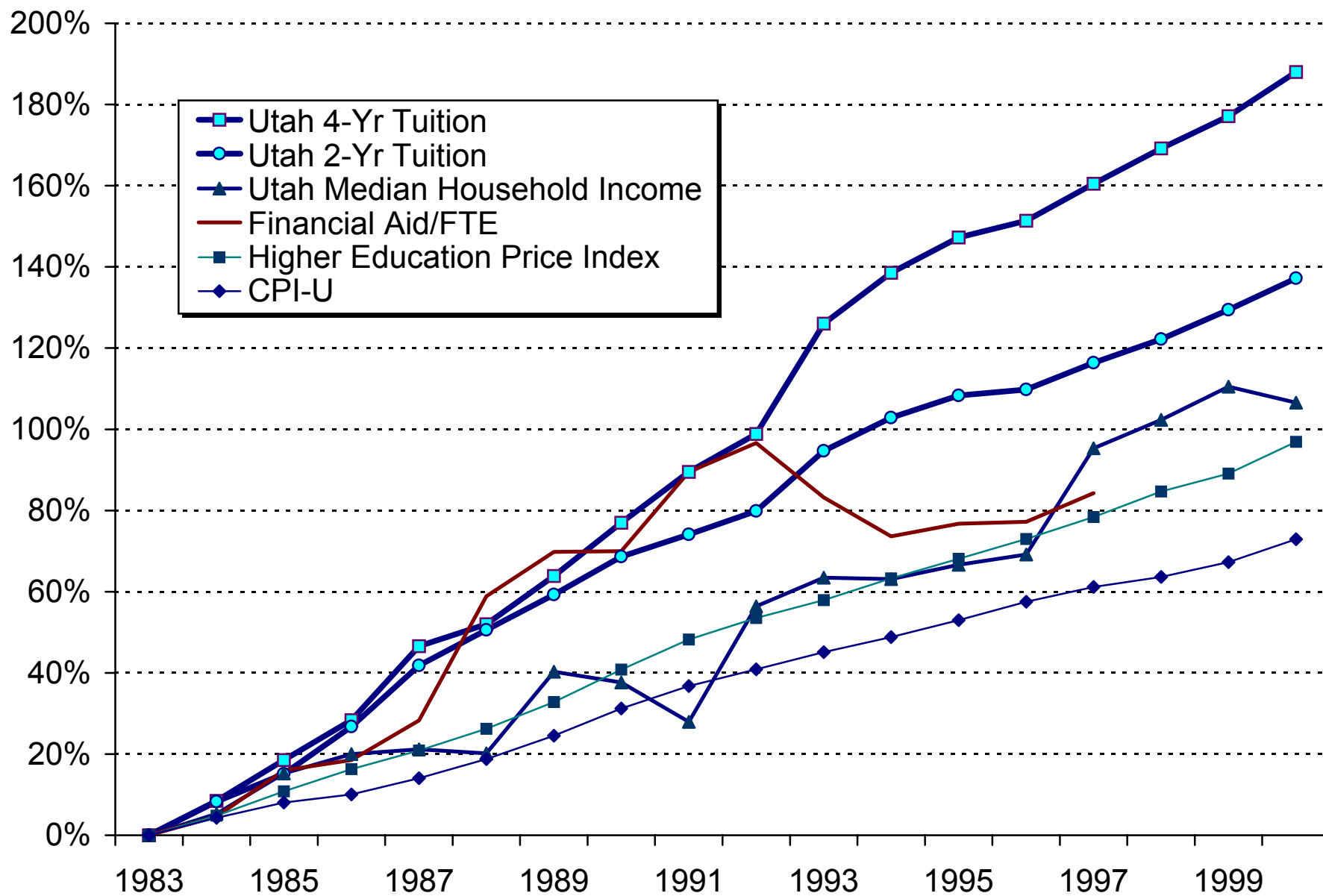
# Annual Costs of Attendance

## *Two-Year Public Institutions*



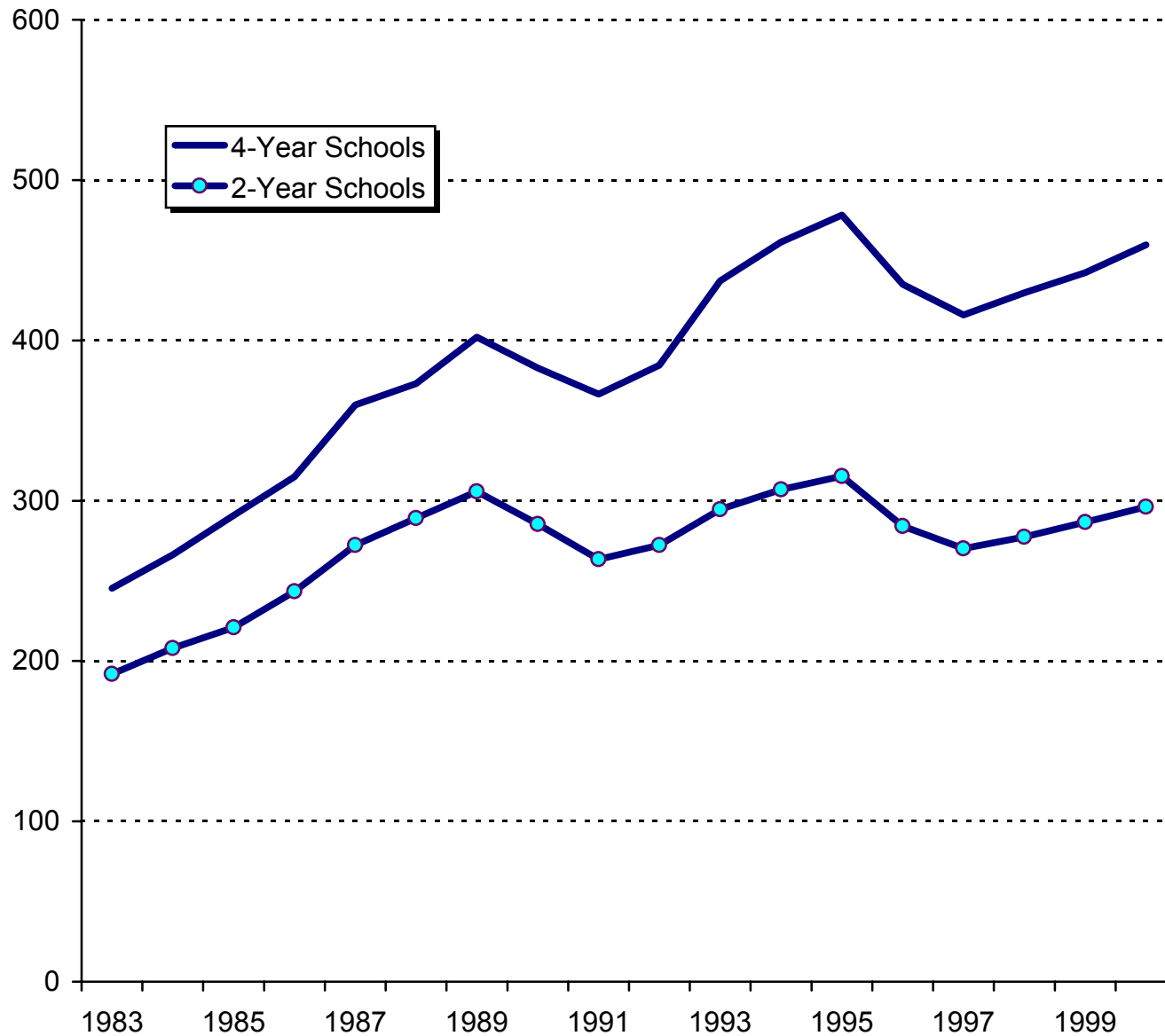
# Growth of Utah Tuition and Indices of Affordability

## *Cumulative Percent Growth, 1983-2000*



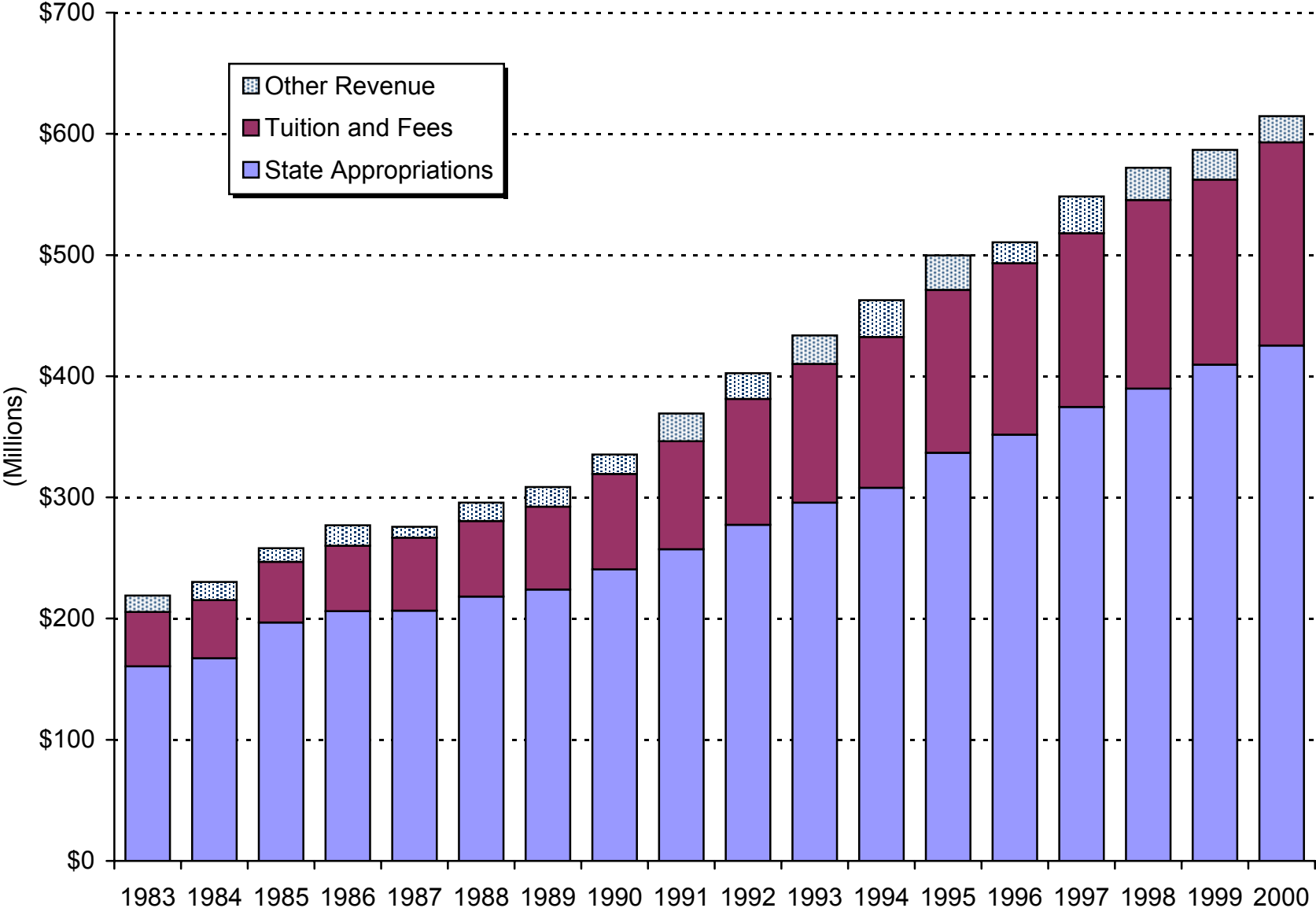
# Hours of Work Required at Minimum Wage to Pay for Tution and Fees

*At Utah Public Institutions*



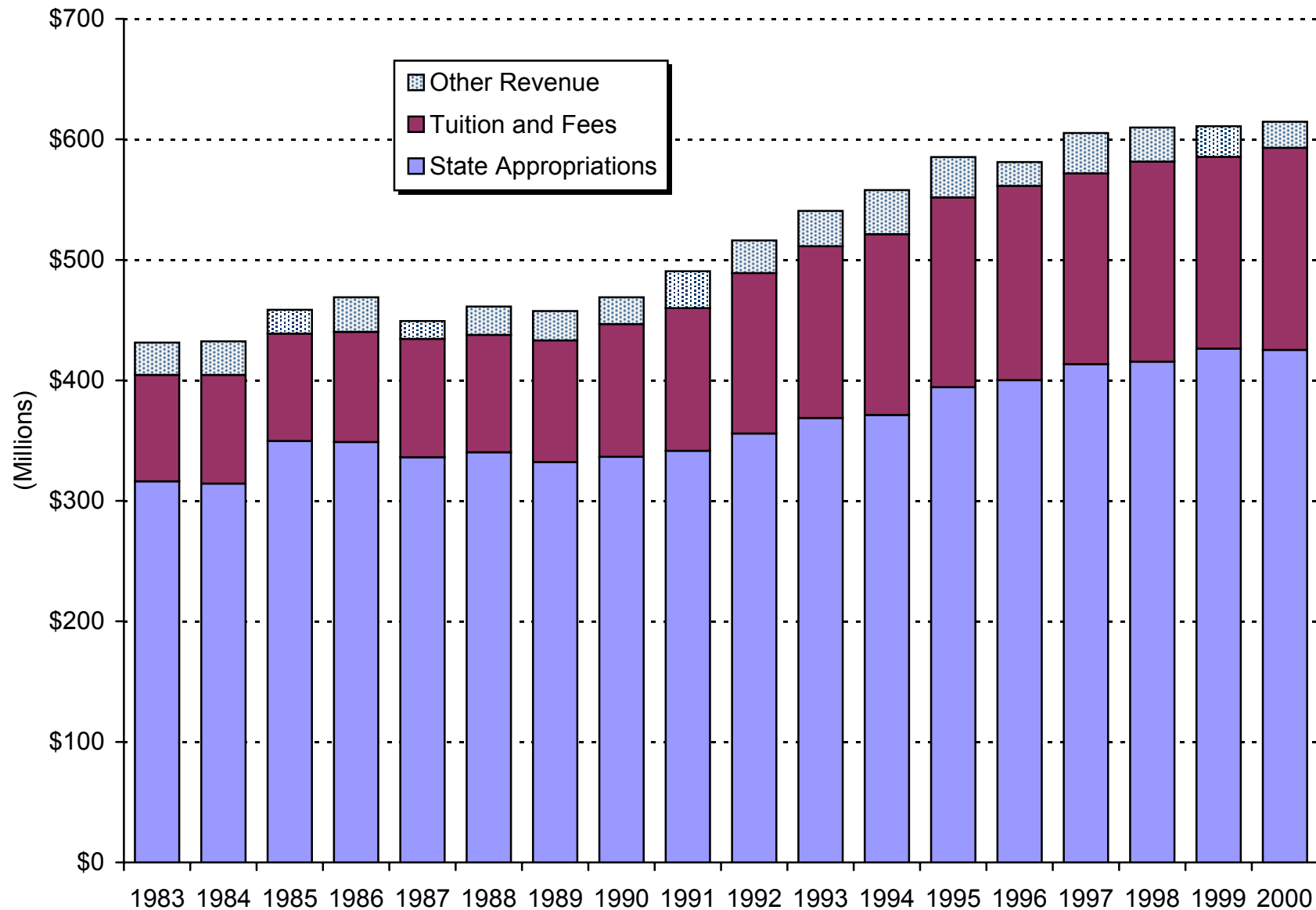
# Revenue Sources for Utah Colleges and Universities

*Sum of All Institutions, Current Dollars*

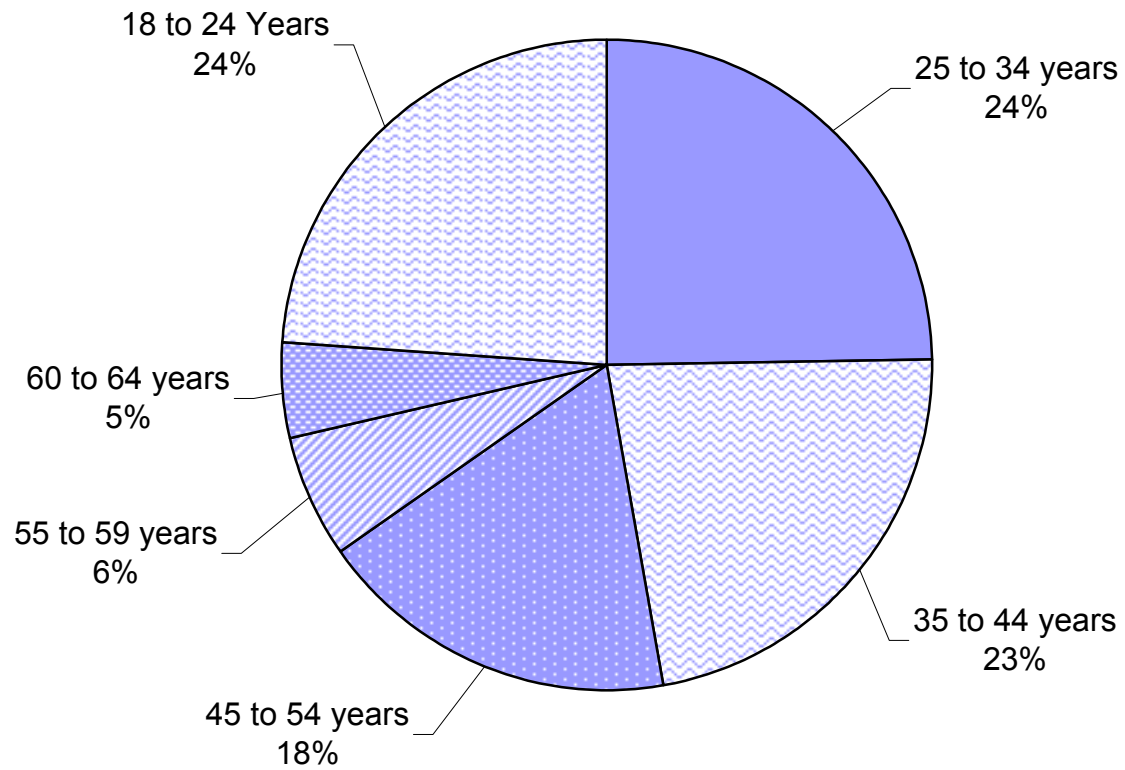


# Revenue Sources for Utah Colleges and Universities

*Sum of All Institutions, Constant Dollars  
Adjusted by Higher Education Price Index*



# Utah Working Population 18-64 Years Old, by Age Group



# United States Working Population 18-64 Years Old, by Age Group

